



RADIAL CEMENT BOND LOG

File No:	Company ENERGY WORKS CANADA.									
LSD.	Well		STRATEGIC ET AL CAMERON A-03 60 10N 117 30W							
SEC.	Field		CAMERON HILLS							
TWP.	Province		NWT		Country		CANADA			
RGE.	Surface Location A-03 60 10N 117 30W				License 0002047		Other Services:			
WEST	LSD.		SEC.		TWP.		RGE		W.	
Permanent Datum			GROUND LEVEL			Elevation		767.4		Elev K.B. 772.8
Log Meas. From			KELLY BUSHING			M. Above Datum		5.4		Elev D.F.
Drilling Meas. From			KELLY BUSHING					Elev G.L.		767.4
Date	MARCH 12, 2020				Perforations					
Run No	ONE				Density	Shots		From	To	
Type Log	CCL-GR-RCBL									
Depth Driller (OH)	1590.0									
Depth Driller (CH)	1589.6									
Depth Logged (PBDT)	1480.0									
Bottom Log Interval	1480.0									
Top Log Interval	SURFACE									
Fluid Type	H2O									
Fluid Level	20.0									
Wellhead Pressure (KPa)	DEAD									
Max. Temp. (°C)	50°C				Carrier Size	mm		Carrier Type		
Truck # / Location	#512/ RED DEER				Charge Size	gr		Charge Type		
Recorded By	TYLER SALMON				Penetration	mm		Entry Hole	mm	
Witnessed By	MIKE GREENWOOD				Phasing					
Casing Record	Size (mm)	Weight (Kg/m)			Top		Bottom			
Surface Casing	219.1	35.7			SURFACE		435.8			
Production Casing	139.7	23.1			SURFACE		1589.6			

	Size (mm)	Type	Model	Depth
Bridge Plug				
Cement Retainer				
Packer				
Invoice #	512-200312-2			
Reference Literature	NO REFERENCE LITERATURE. TOOL REFERENCED TO KB AND SURFACE CASING SHOE.			
Remarks: LOGGED AS PER CUSTOMER REQUEST.				
CEMENT DATA:				
SURFACE CASING CEMENTED WITH 31 TONNES 0:1:0 G + 1.5% CaCl2. 8.0m3 CEMENT RETURNS				
PRODUCTION CASING CEMENTED WITH 22.0 TONNES THIXLITE + 1.0% SMS FOLLOWED BY 15 TONNES EXPANDOMIX LWL + 1.0% CFL-3				
+0.2% LTR +0.2% SPC-II. NO MENTIONS OF RETURNS.				
All interpretations are opinions based on inferences from electrical or other measurements and we cannot, and do not guarantee the accuracy or correctness of any interpretations, and we shall not, except in the case of gross or willful negligence on our part, be liable or responsible for any loss, costs, damages or expenses incurred or sustained by anyone resulting from any interpretation made by any of our officers, agents, or employees. These interpretations are also subject to our general terms and conditions as set out in our current price schedule.				

Tool String Configuration

Max. Length: 7.52 m

Cable Head

Length: 0.34 m Max Diameter: 42.90 mm

Bow Spring

Length: 0.66 m Max Diameter: 69.85 mm

CCL-GR

Length: 1.88 m Max Diameter: 69.85 mm

Bow Spring

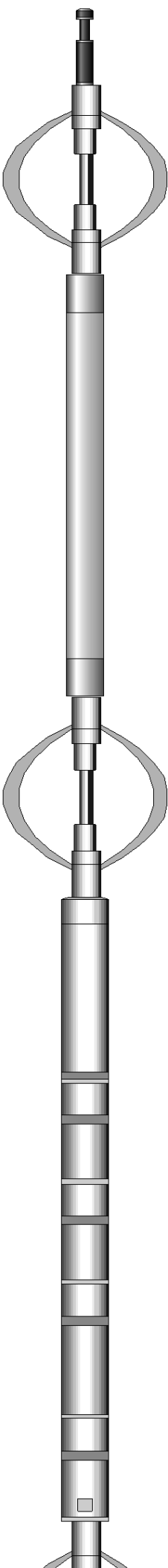
Length: 0.89 m Max Diameter: 69.85 mm

Applied RIB CBL

Length: 2.78 m Max Diameter: 69.85 mm

Bow Spring

With bull plug



-1.41 m Top of String

0.00 m - CCL

1.04 m - GammaRay

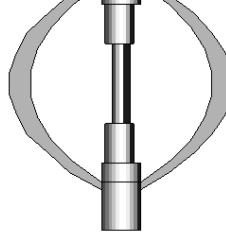
3.36 m - Transmitter

3.82 m - RIB Receivers

4.28 m - 3 ft. Receiver

4.89 m - 5 ft. Receiver

With bull plug Length: 0.97 m Max Diameter: 69.85 mm



6.11 m Bottom of String

MAIN PASS @ 0mPA

2020-03-12 15:07

Tension (lbF)

METERS

1:240

3 Foot Amplitude (mV)

VDL (μs)

Minimum Amplitude (mV)

Cement Map (mV)

0.00 3000.00

AmplitudeX5 (mV)

Maximum Amplitude (mV)

0 100

Transit Time (μs)

Average Amplitude (mV)

0 120

650 150

0 100

Temperature (°C)

Logging Up
Shutin

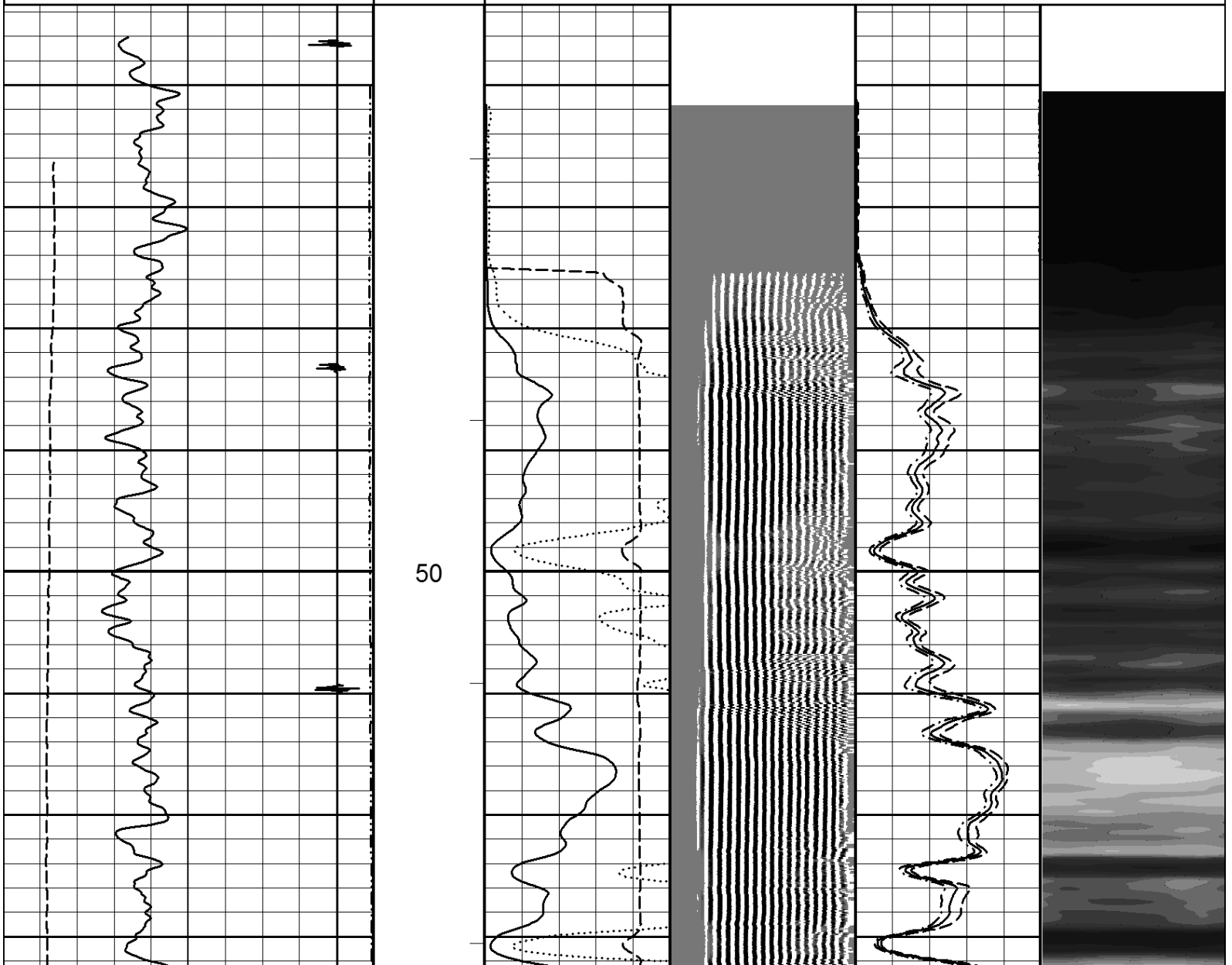
File MAIN PASSEdit.pre

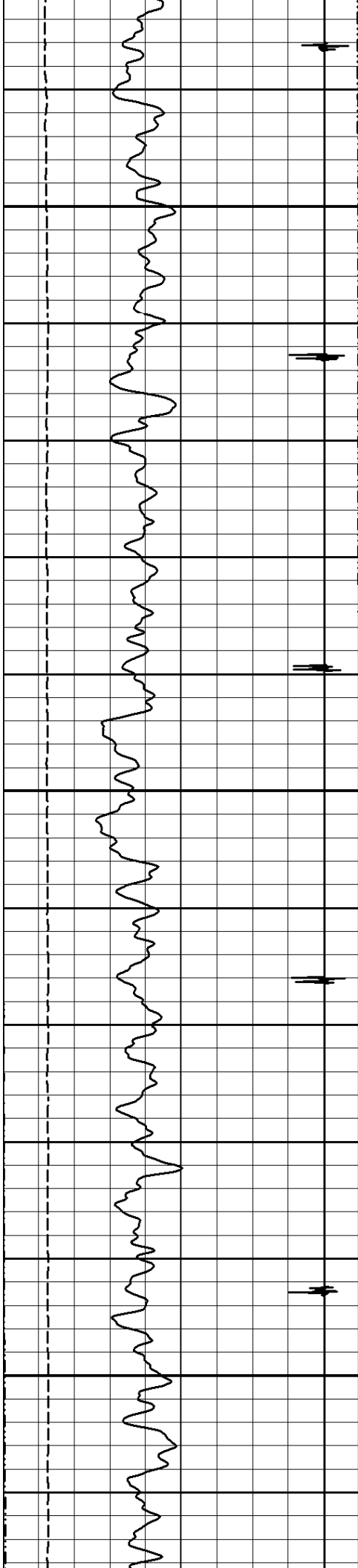
0.00 100.00

Pass No. 5

26.7

Rev. 2017.06.07

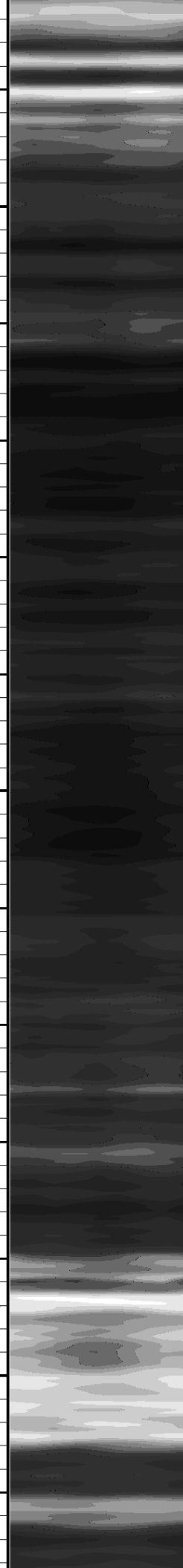
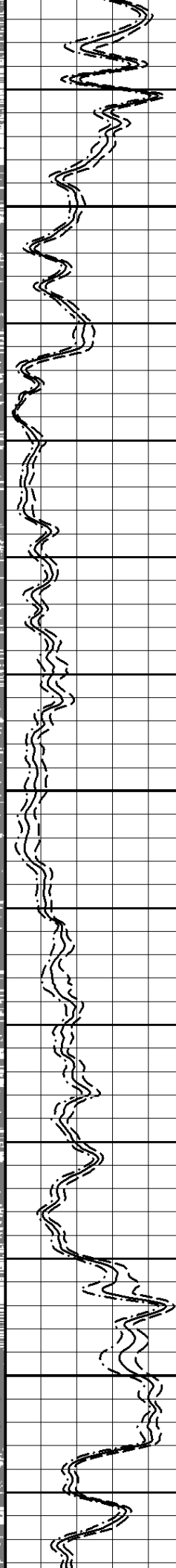
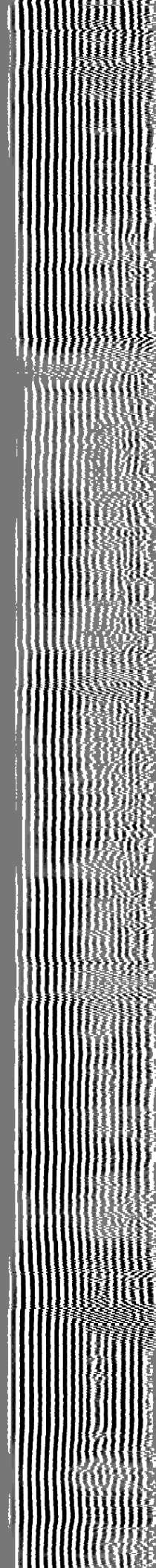
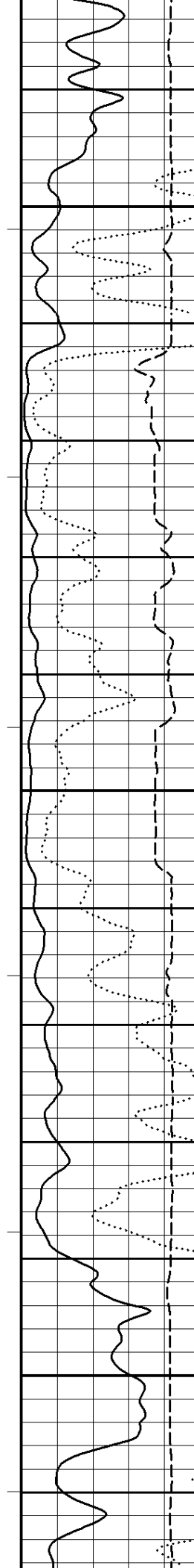


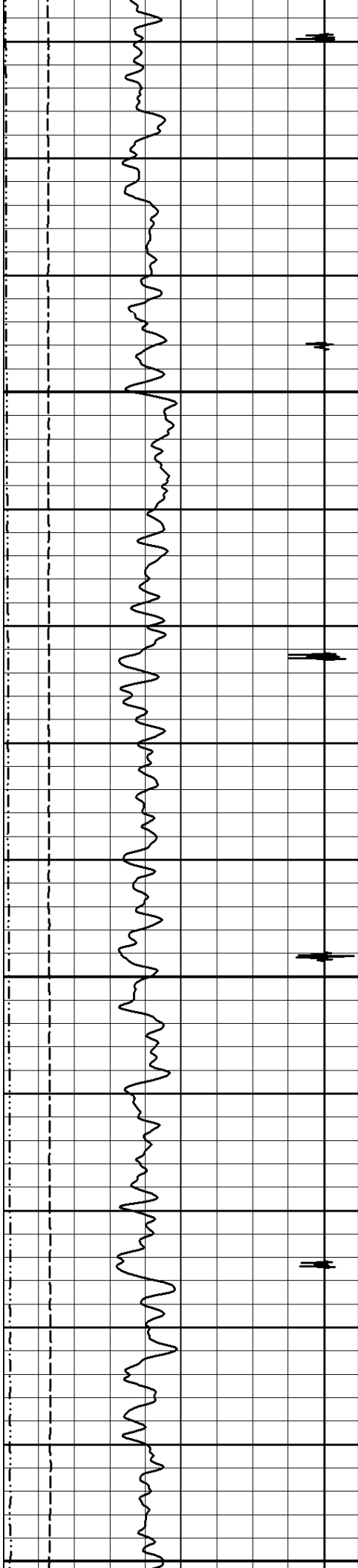


75

100

125

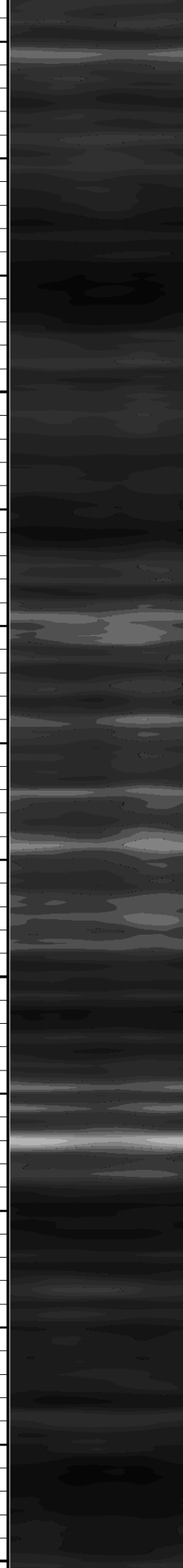
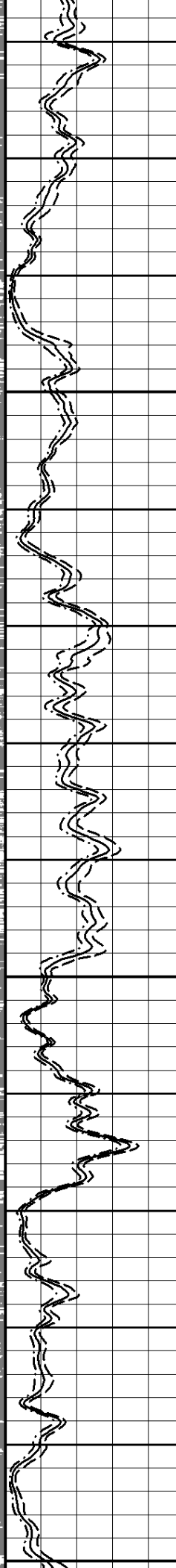
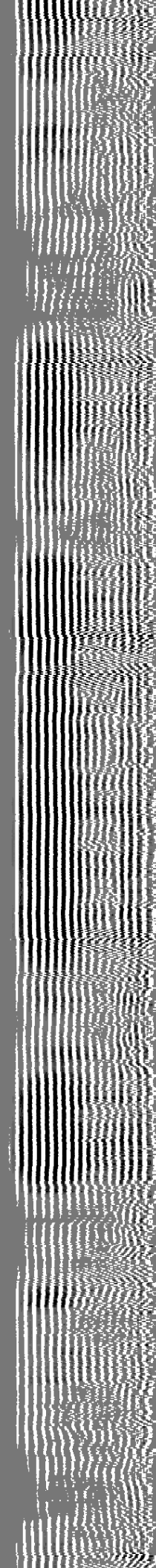
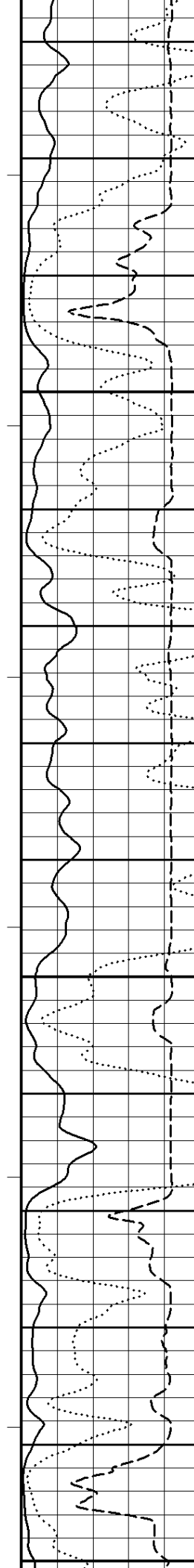


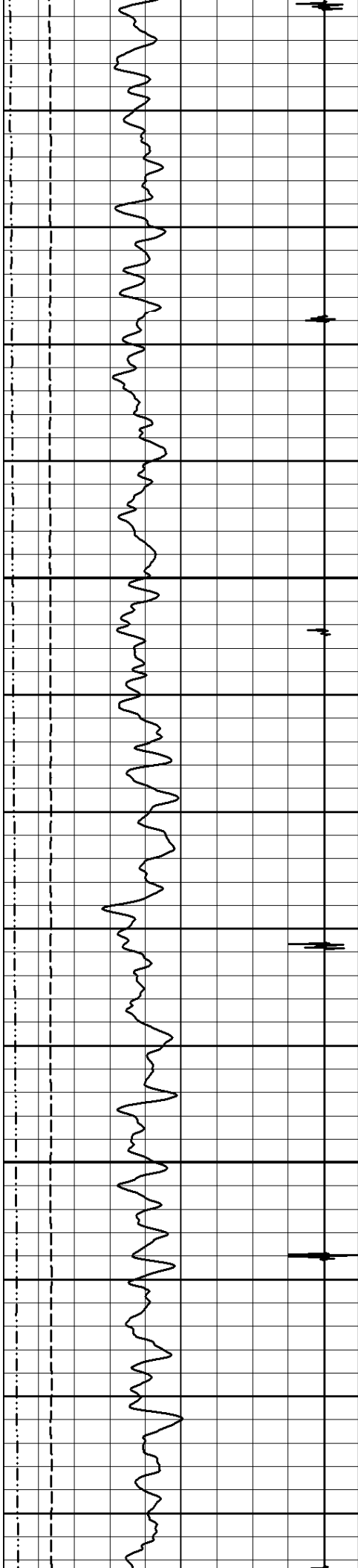


150

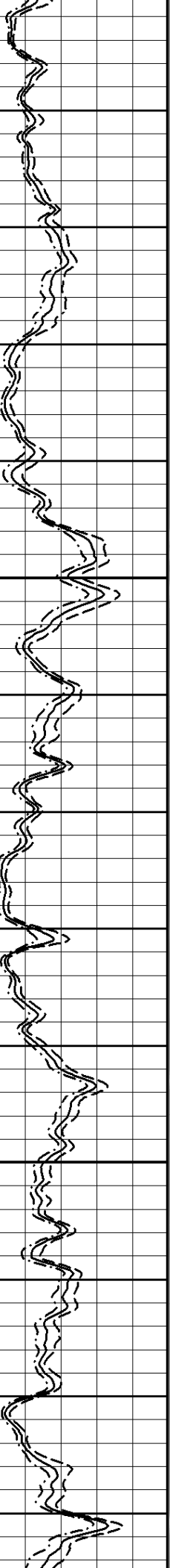
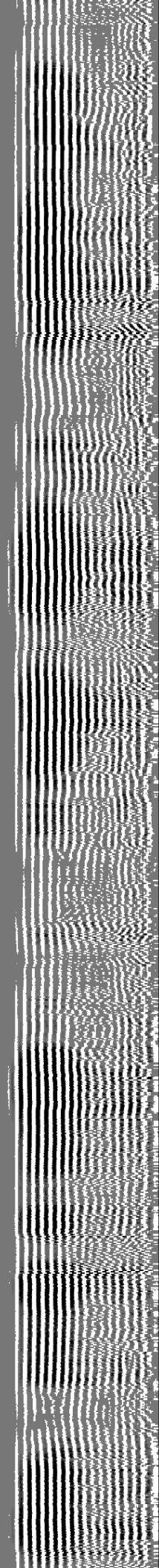
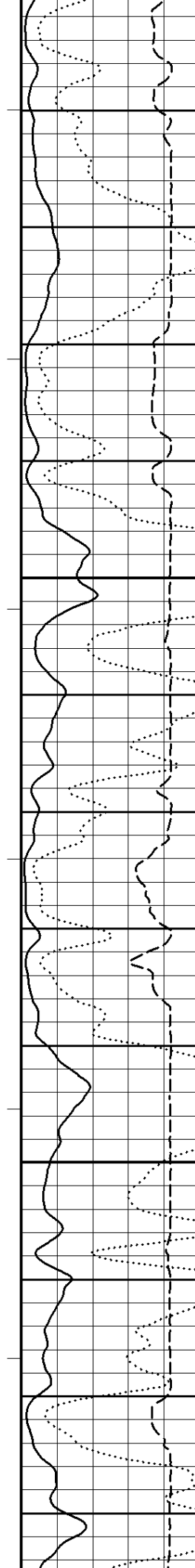
175

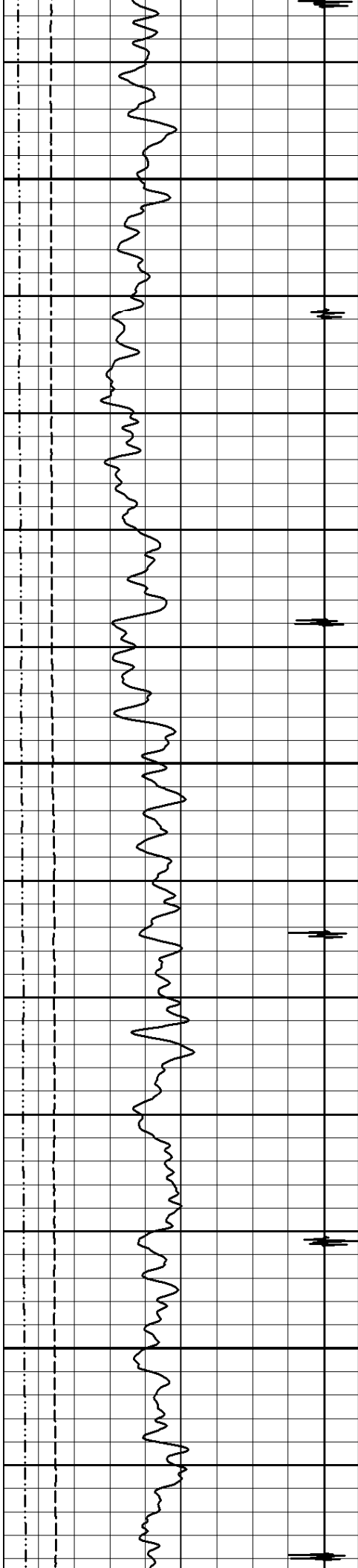
200





200
225
250

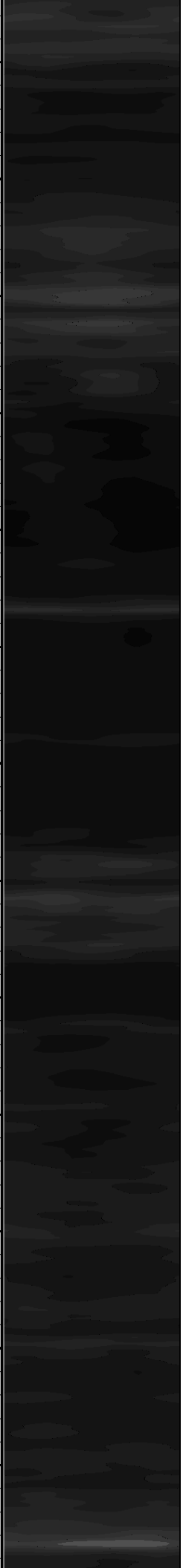
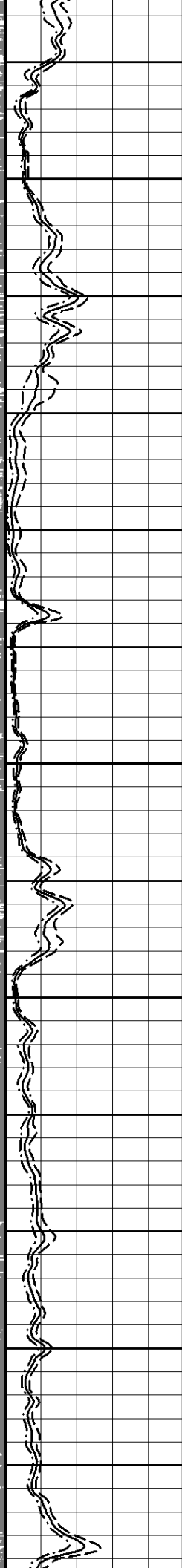
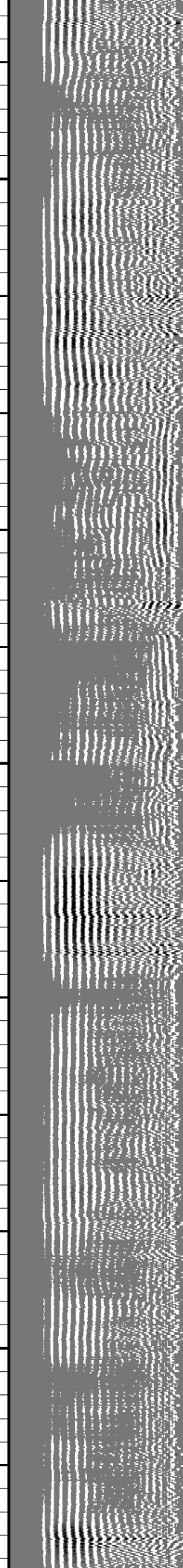
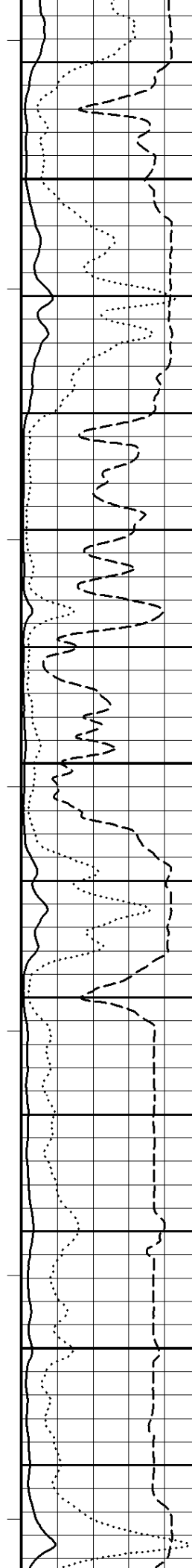


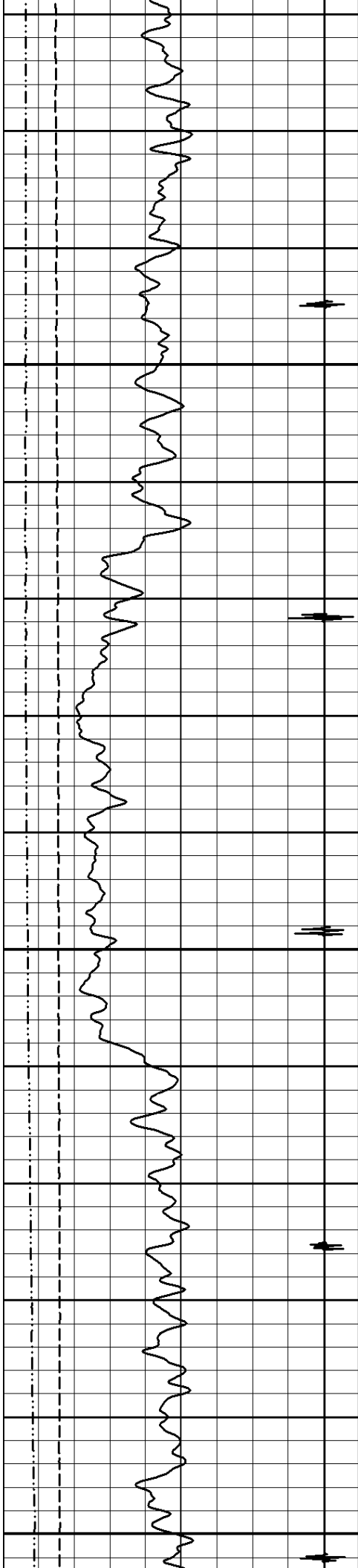


275

300

325

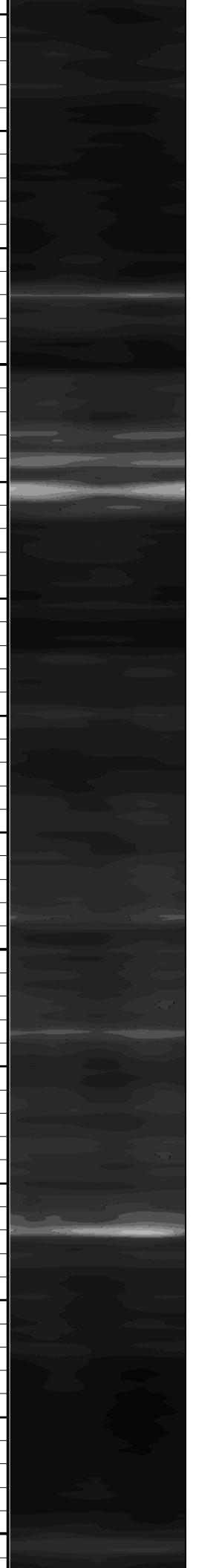
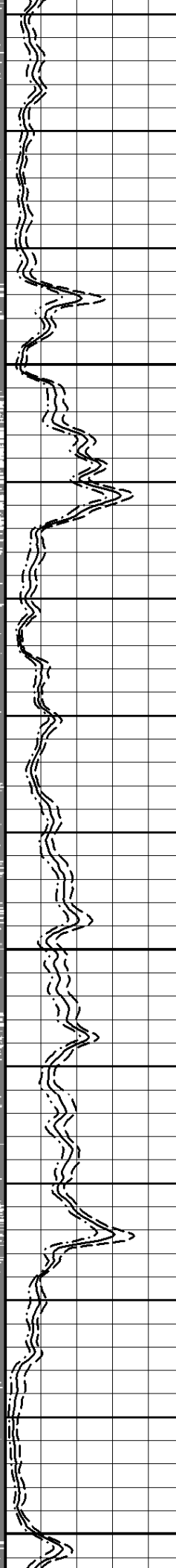
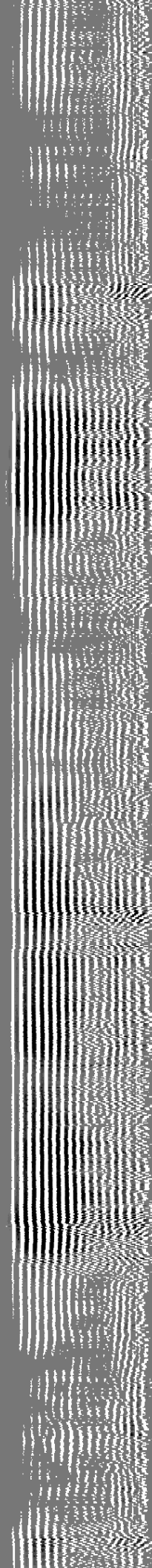
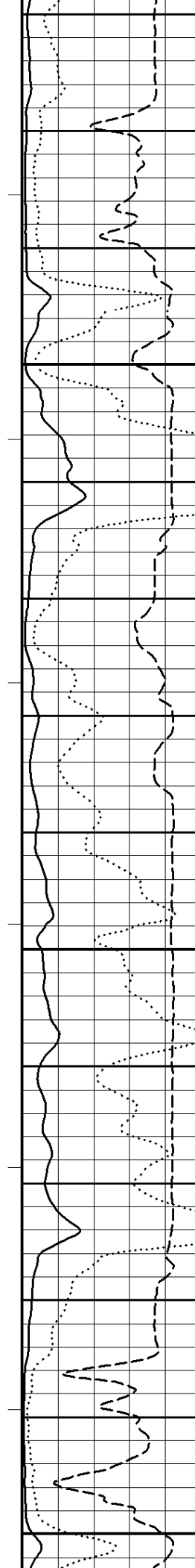


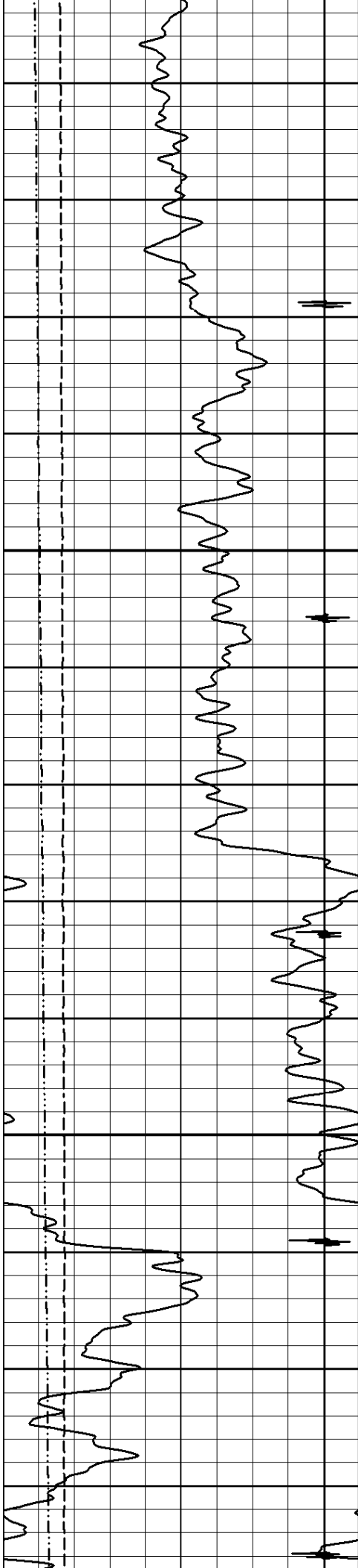


350

375

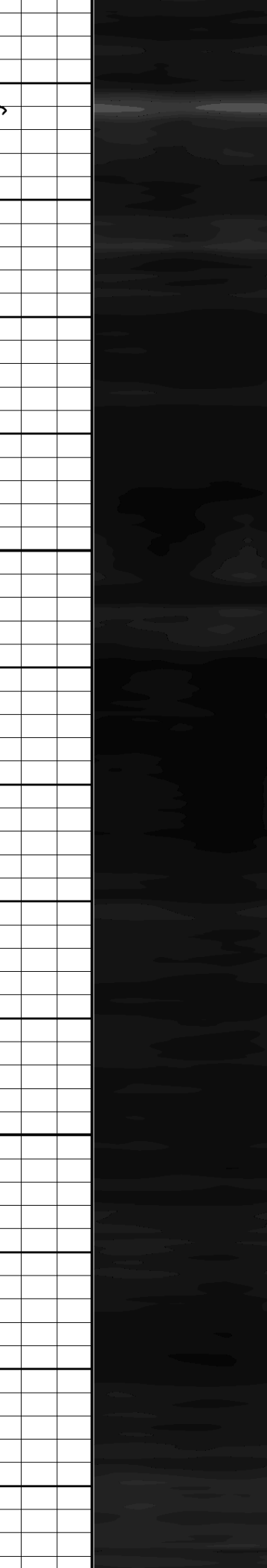
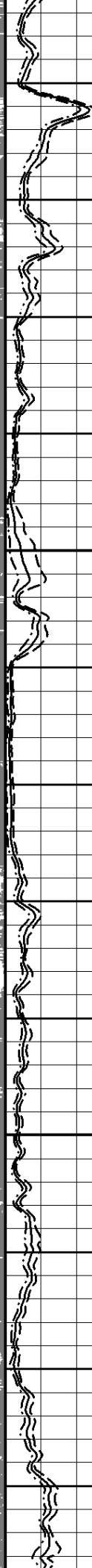
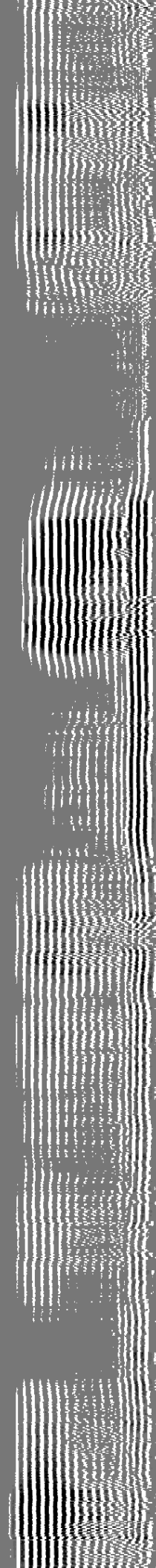
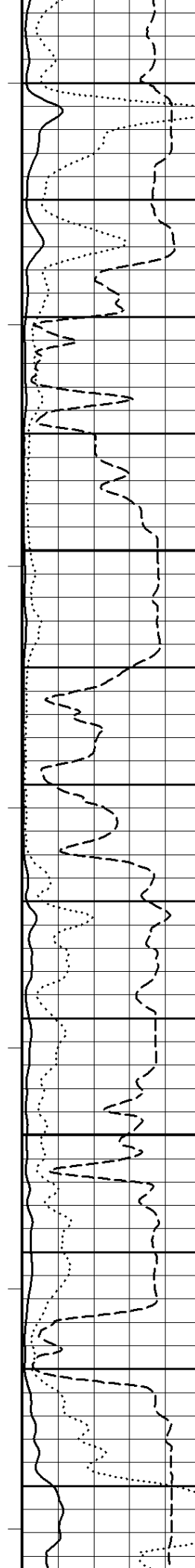
400

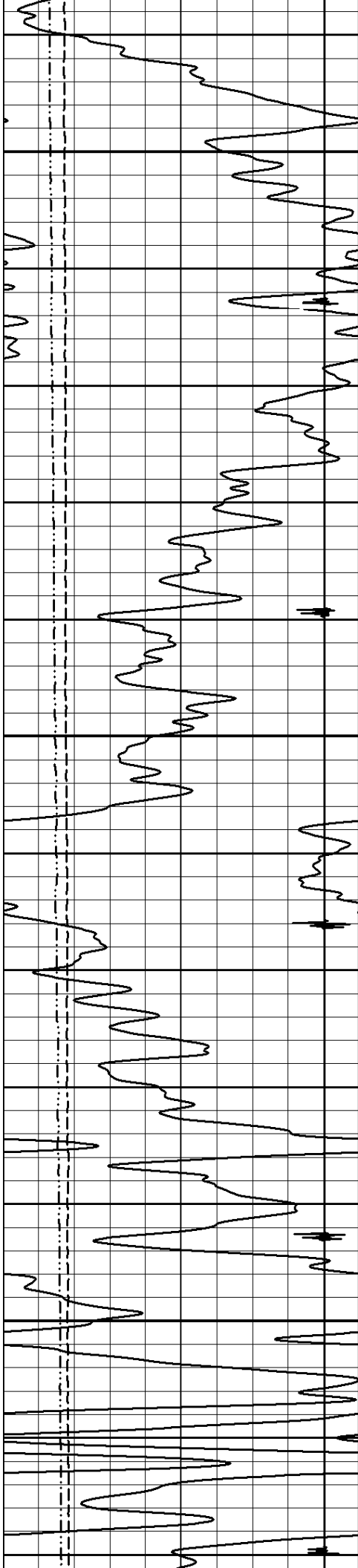




425

450

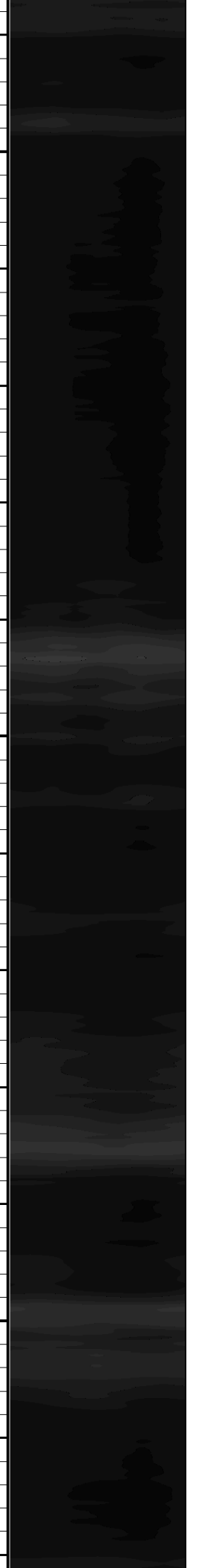
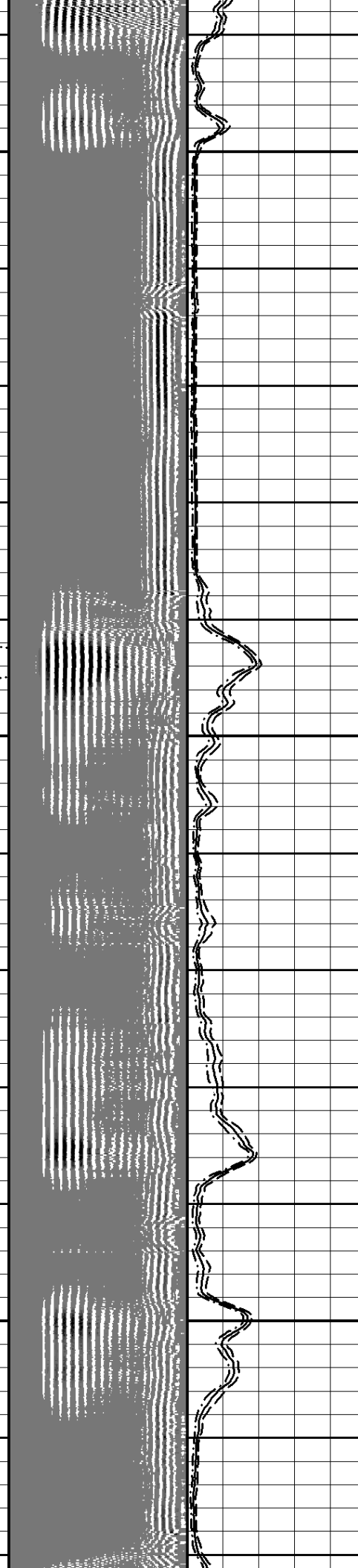
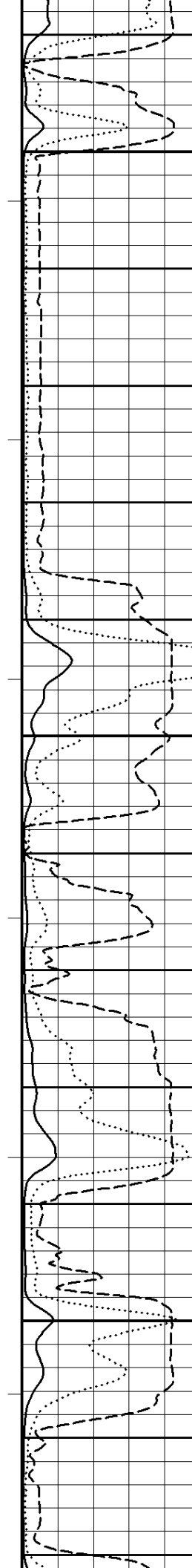


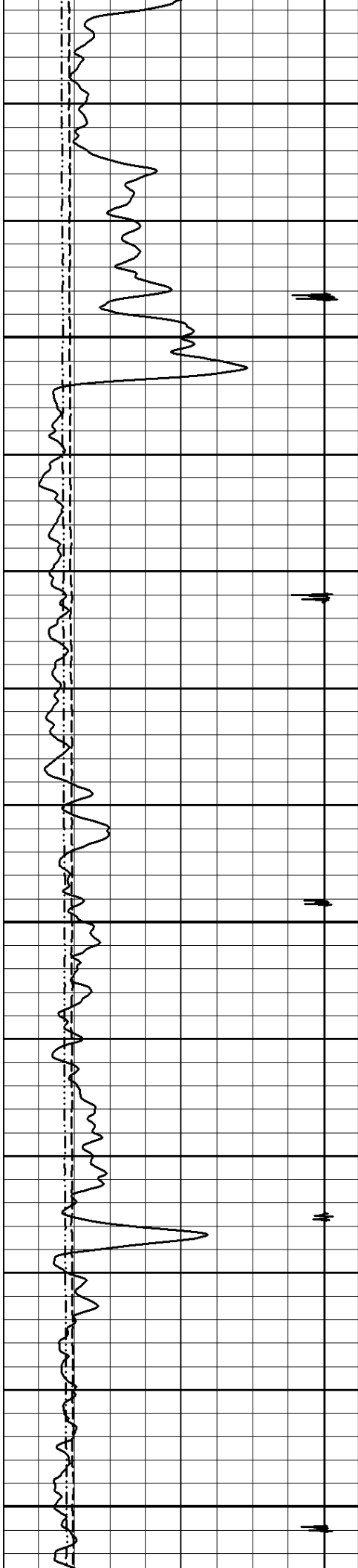


475

500

525

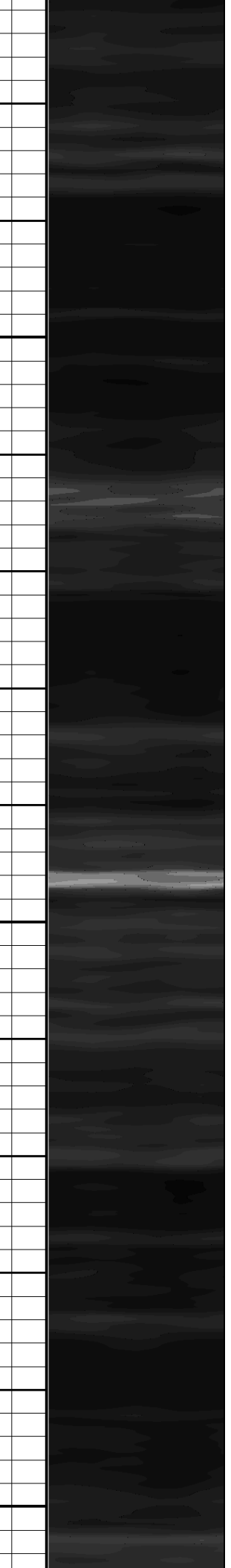
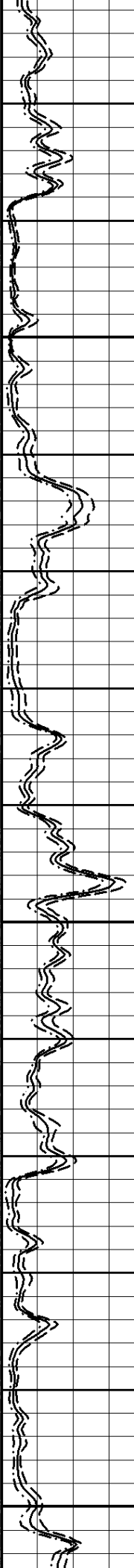
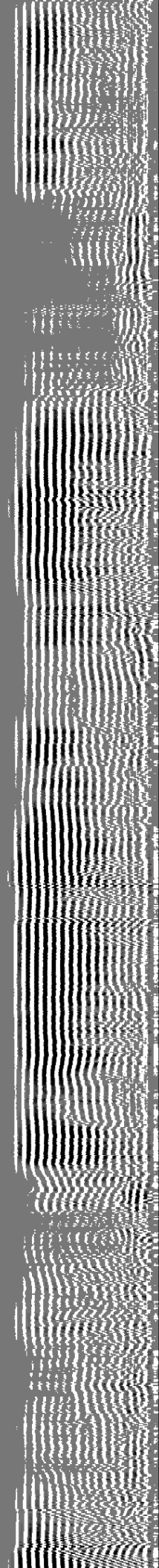
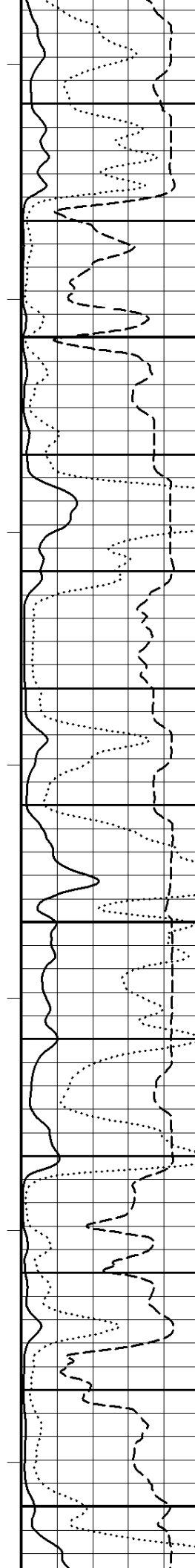


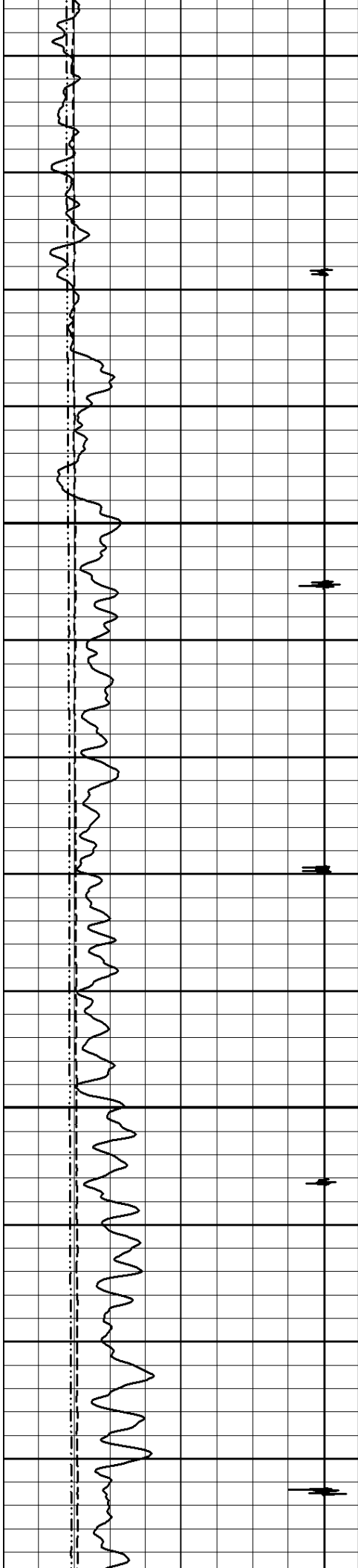


550

575

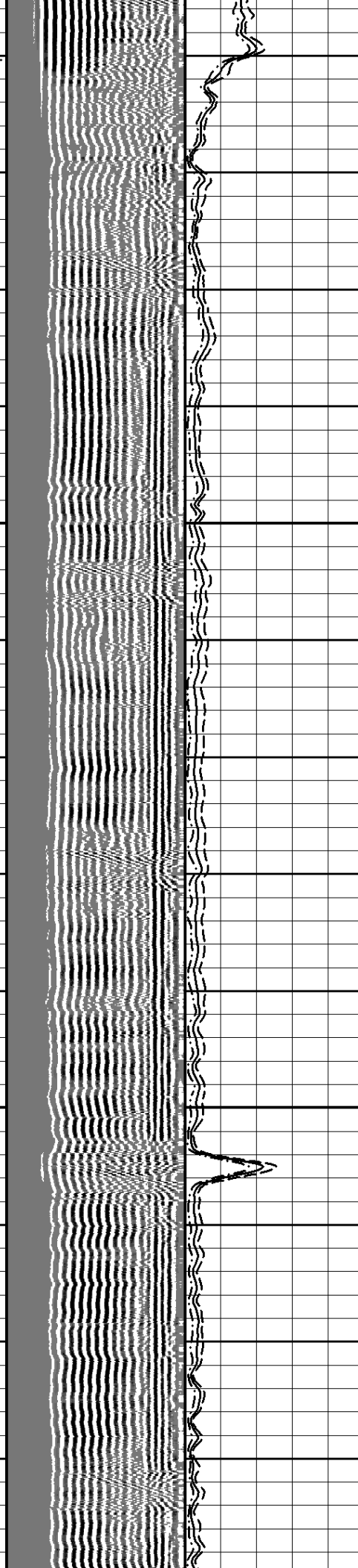
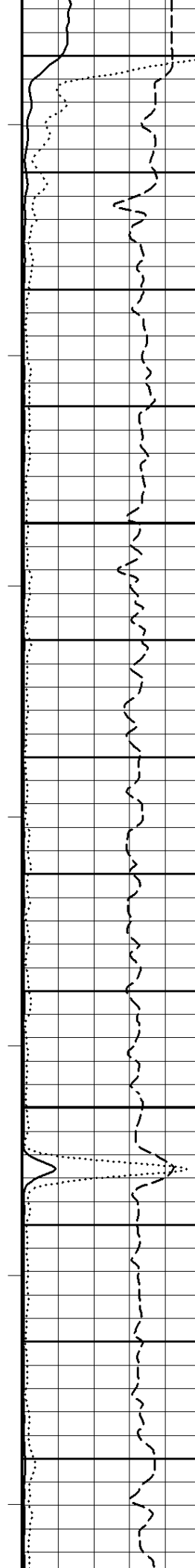
600

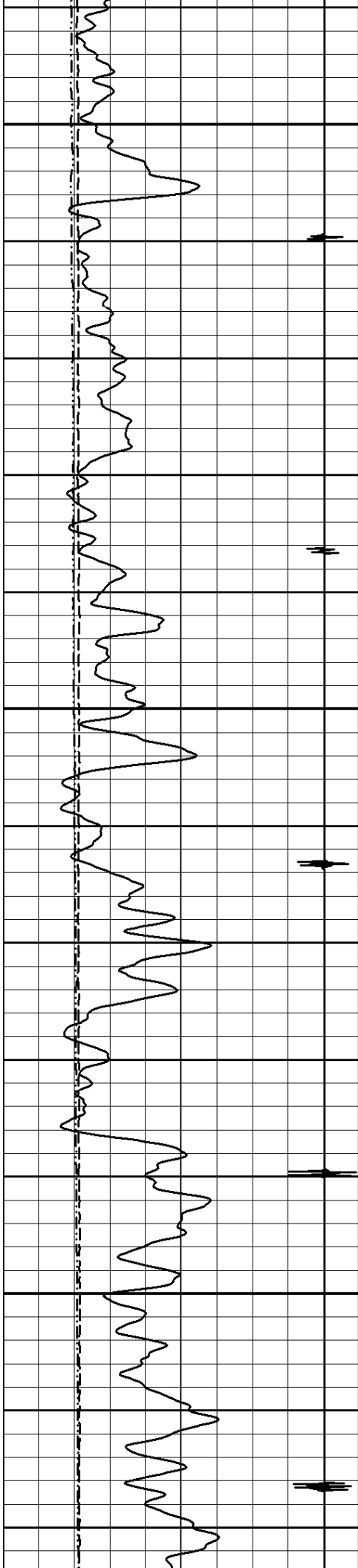




625

650

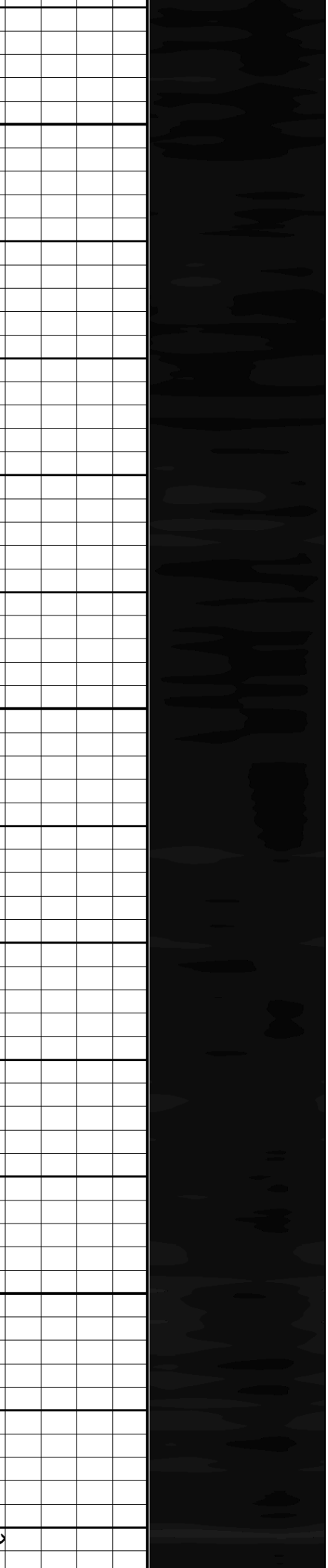
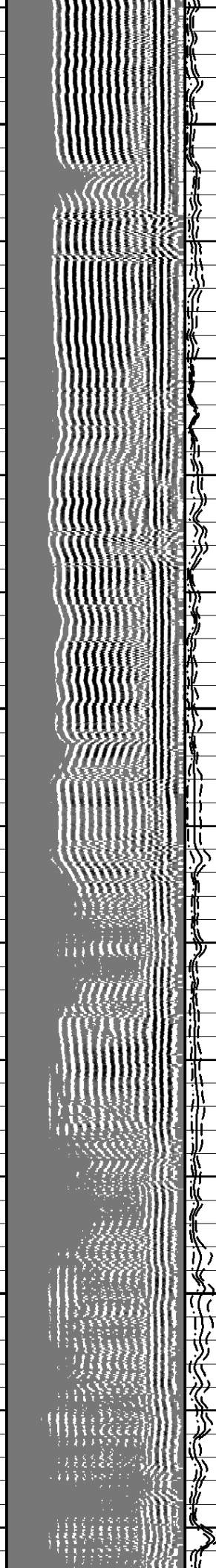
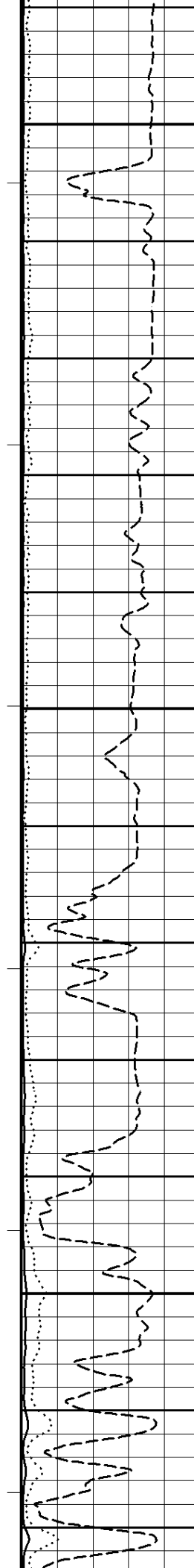


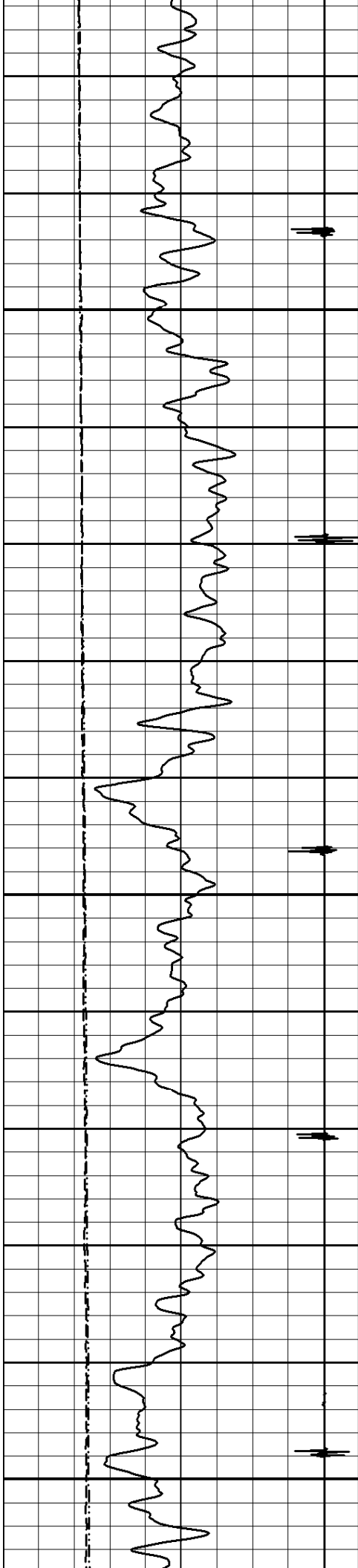


675

700

725

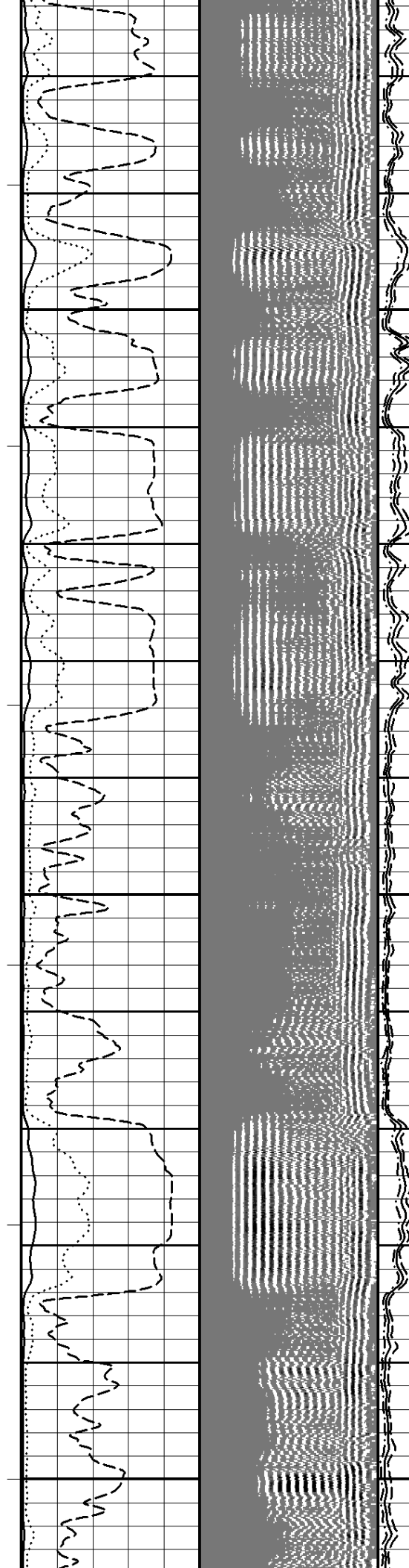


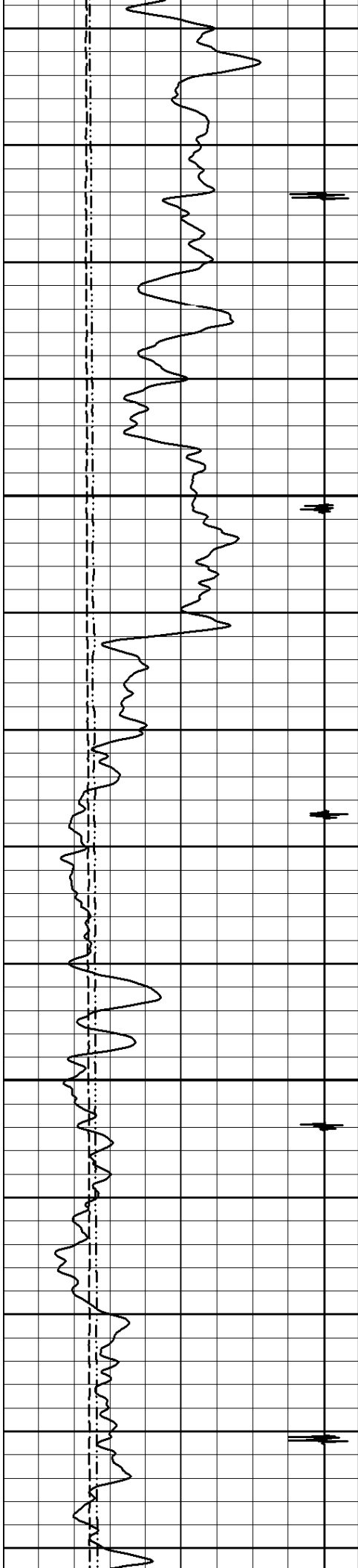


750

775

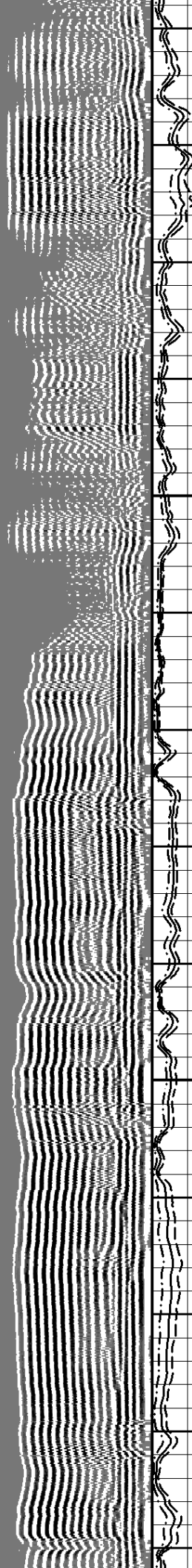
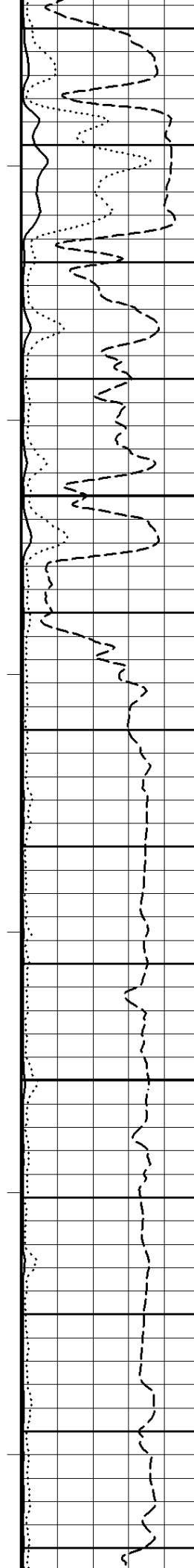
800

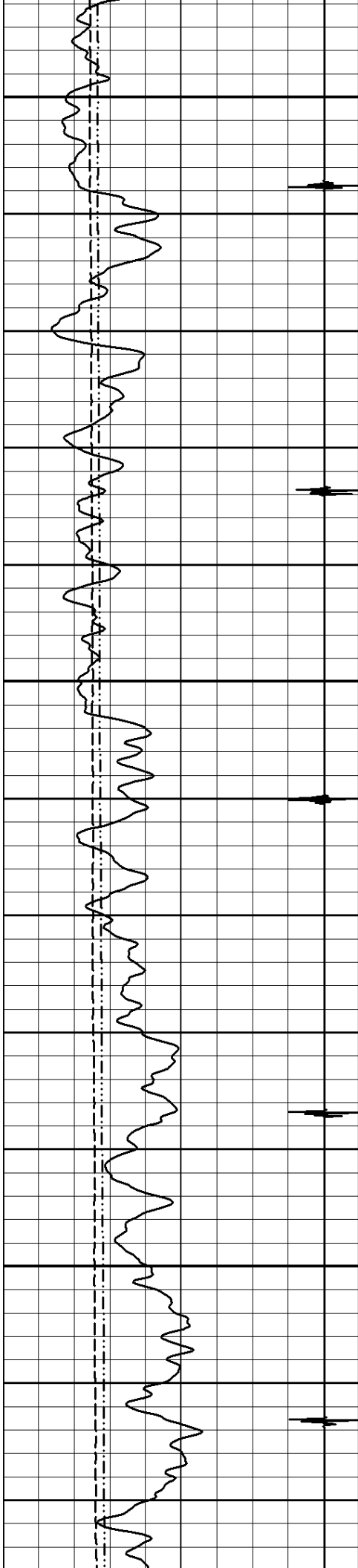




825

850

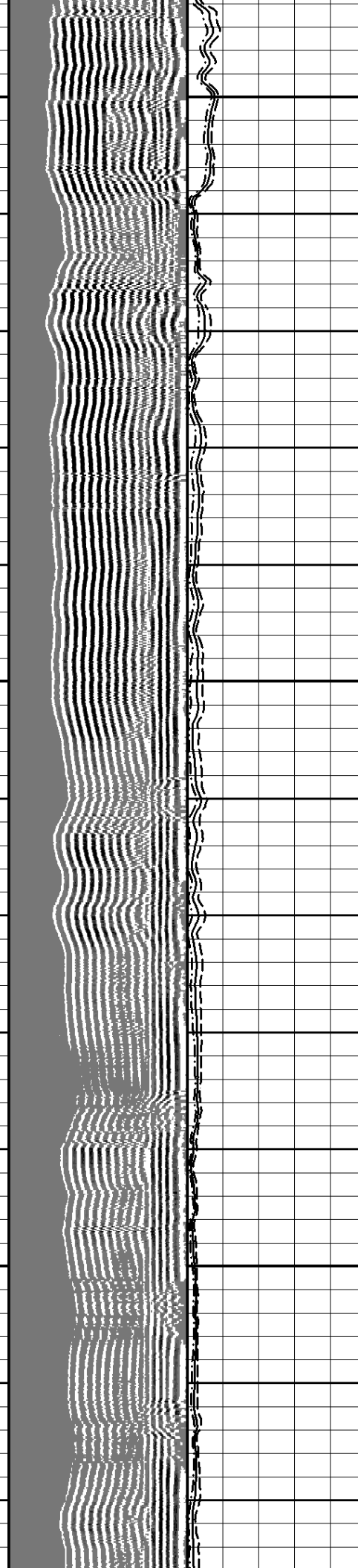
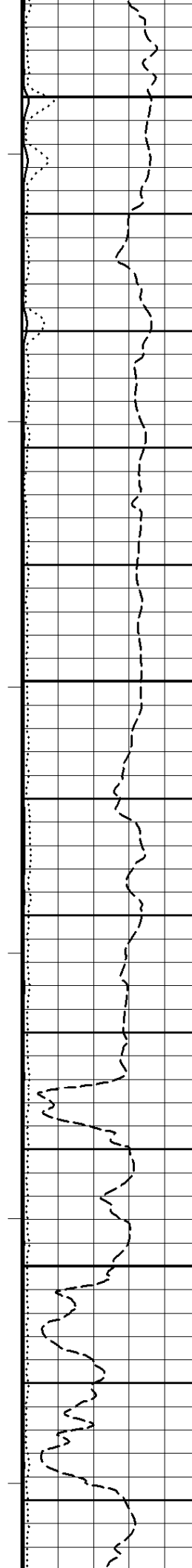


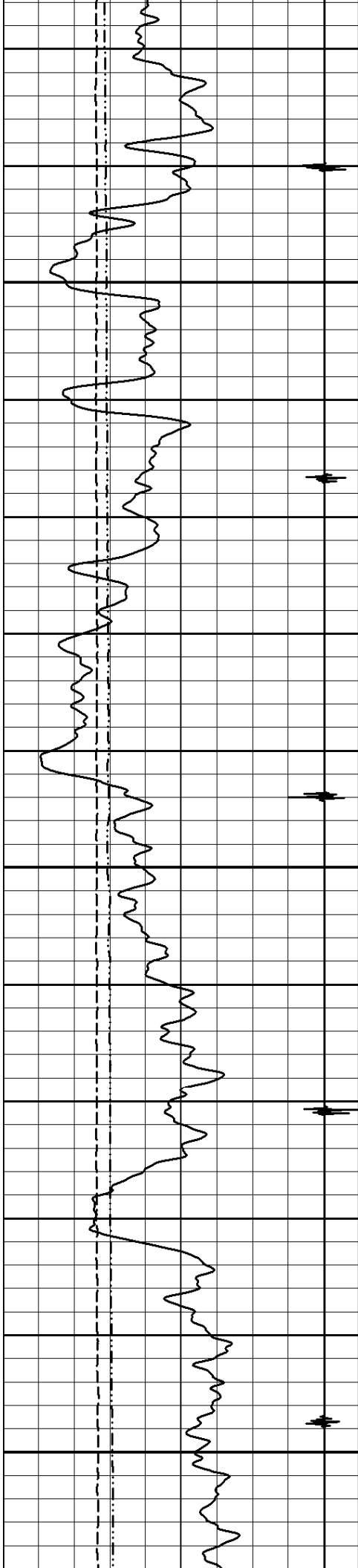


875

900

925

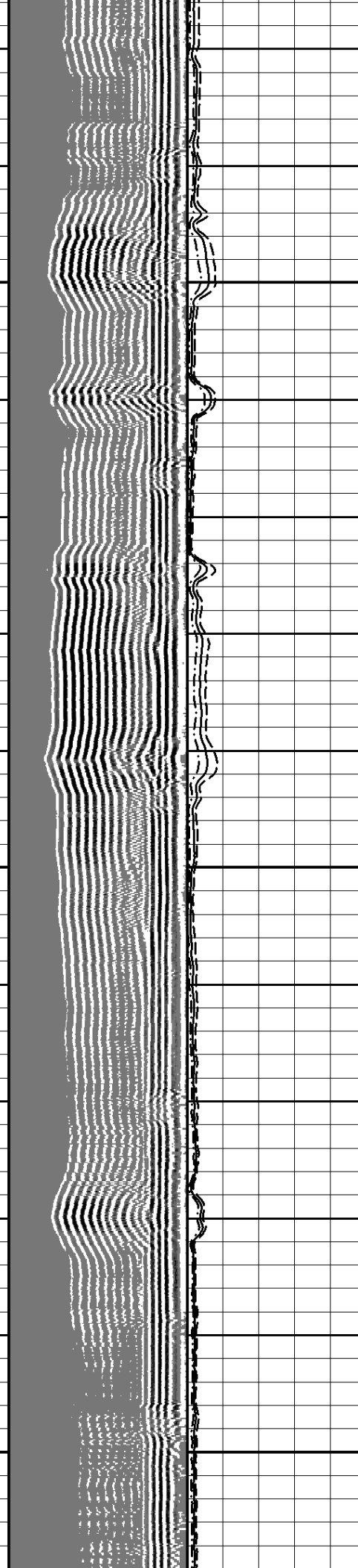
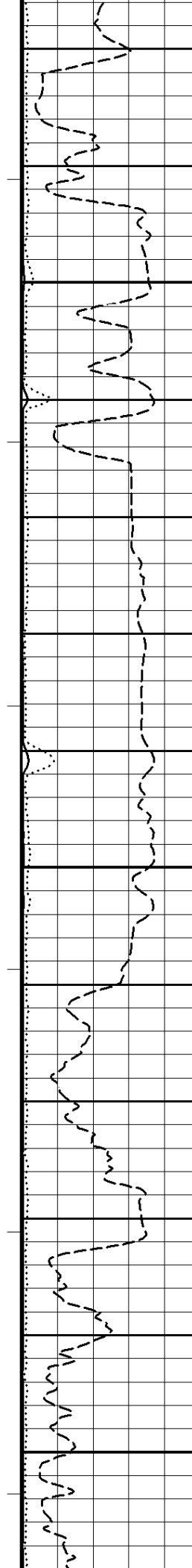


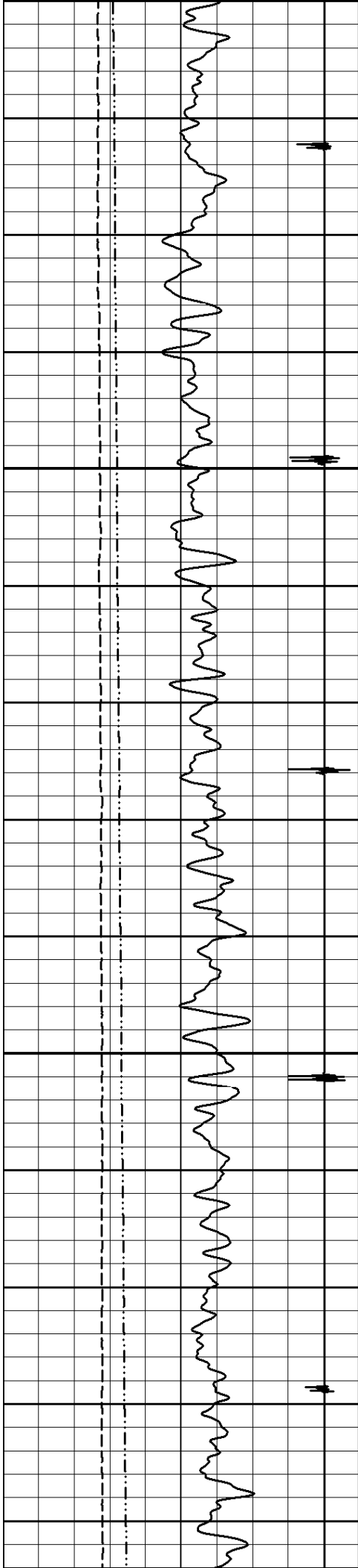


950

975

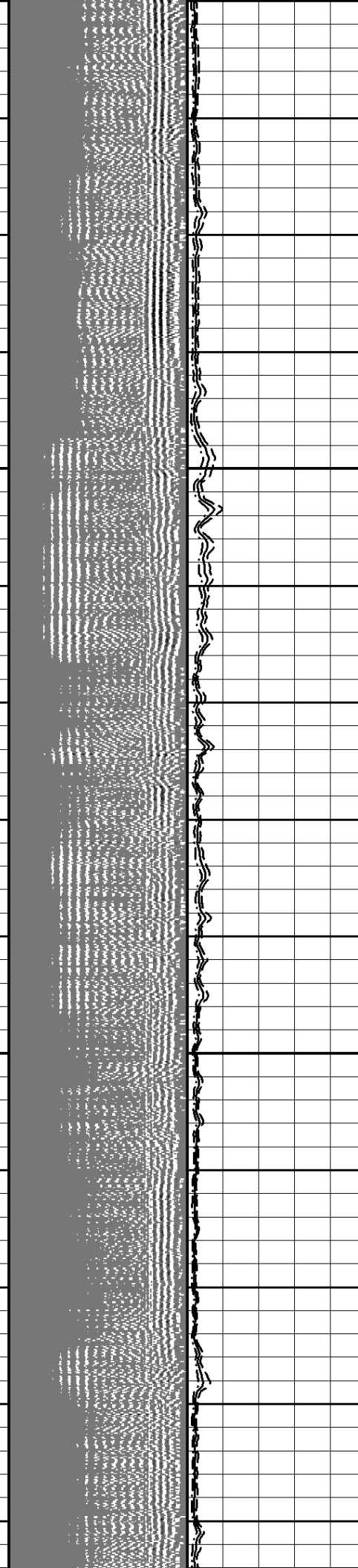
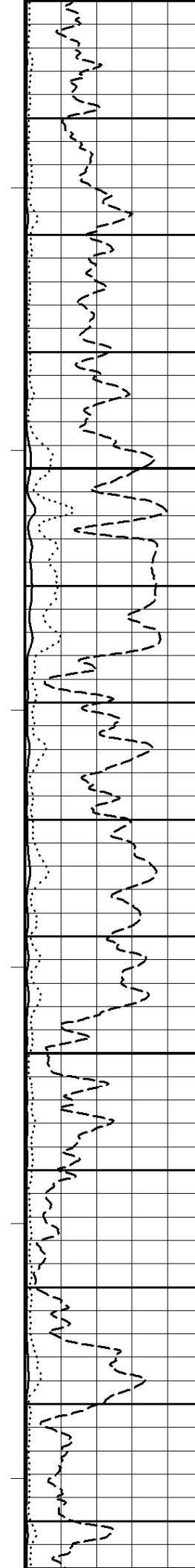
1000

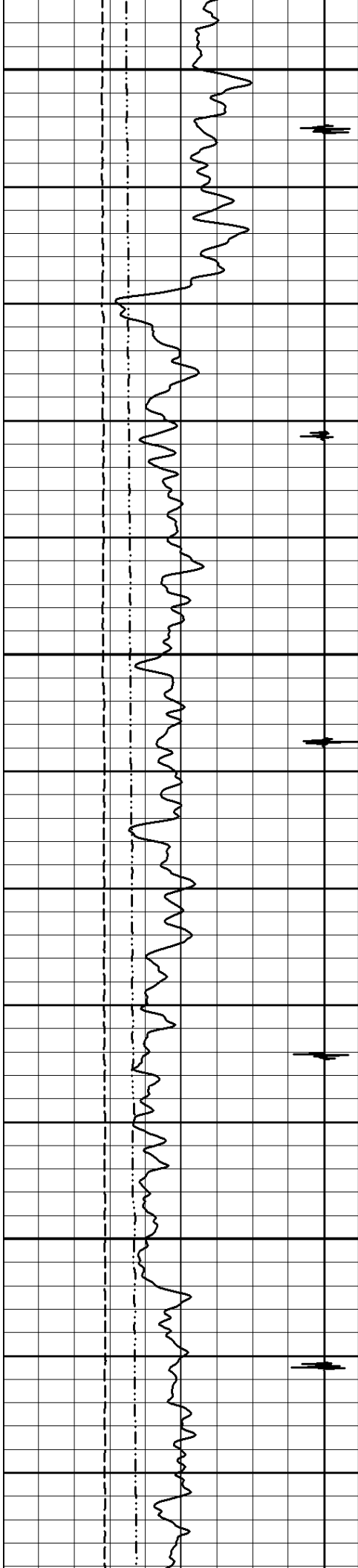




1025

1050

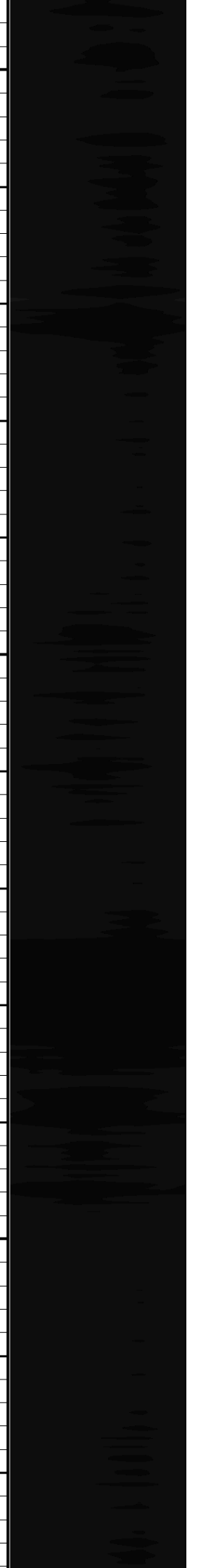
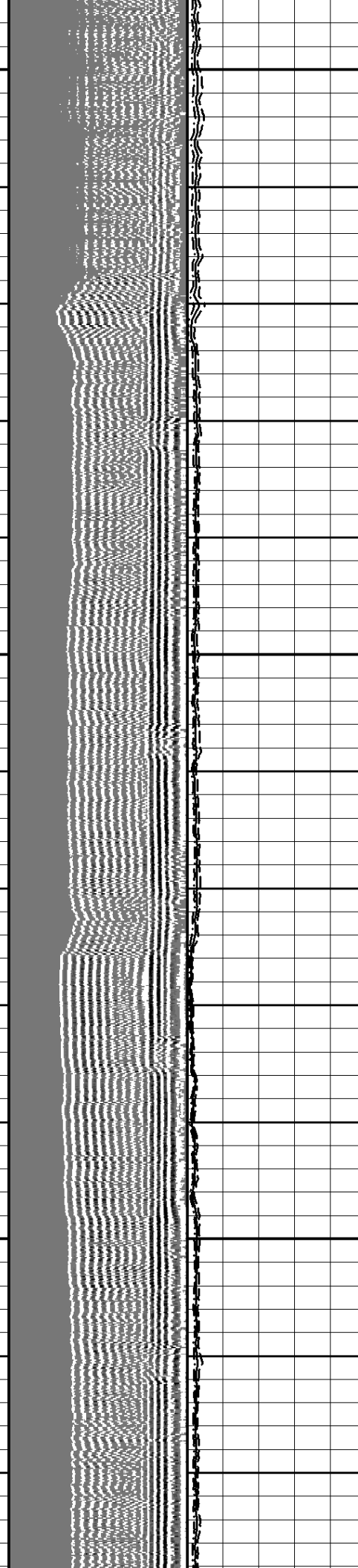
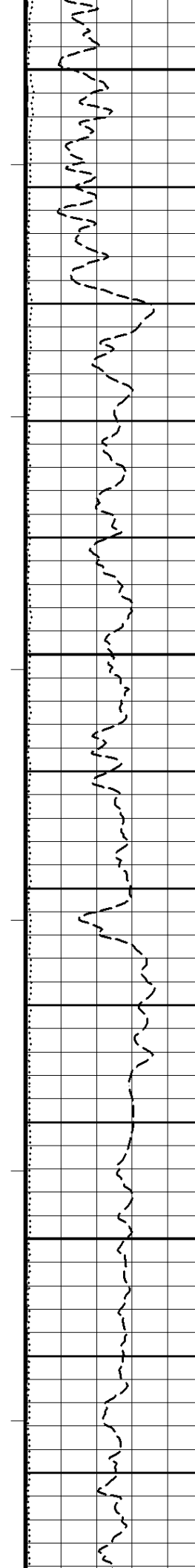


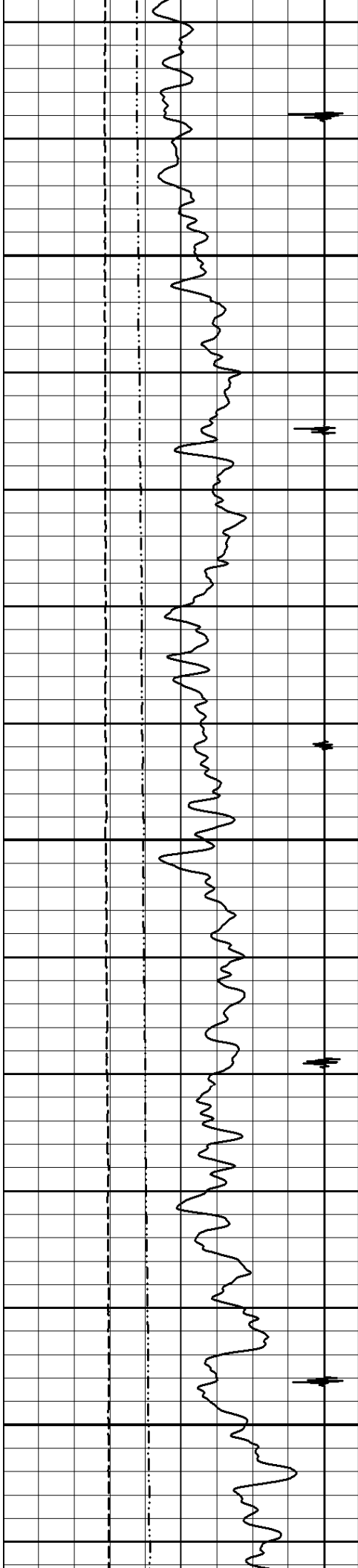


1075

1100

1125

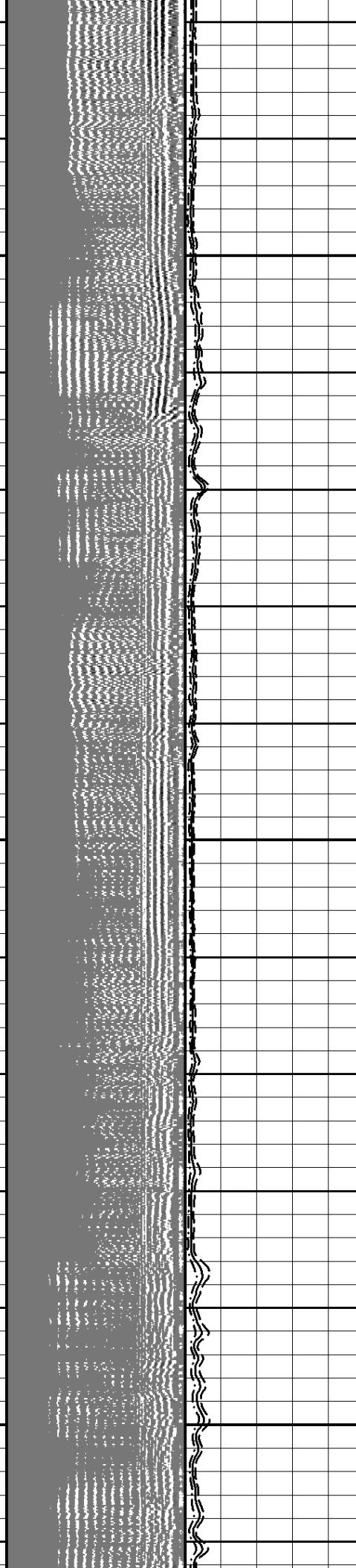
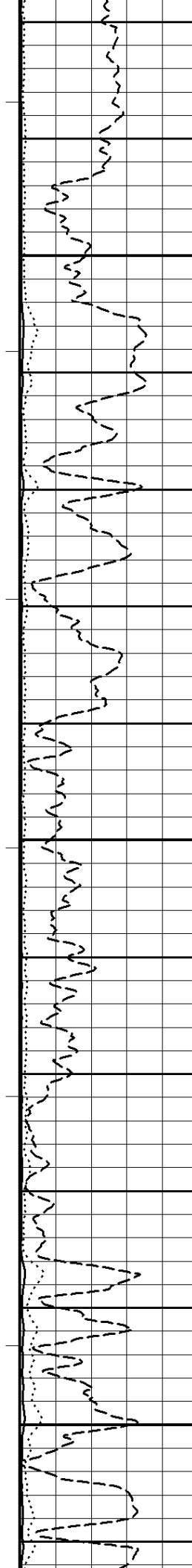


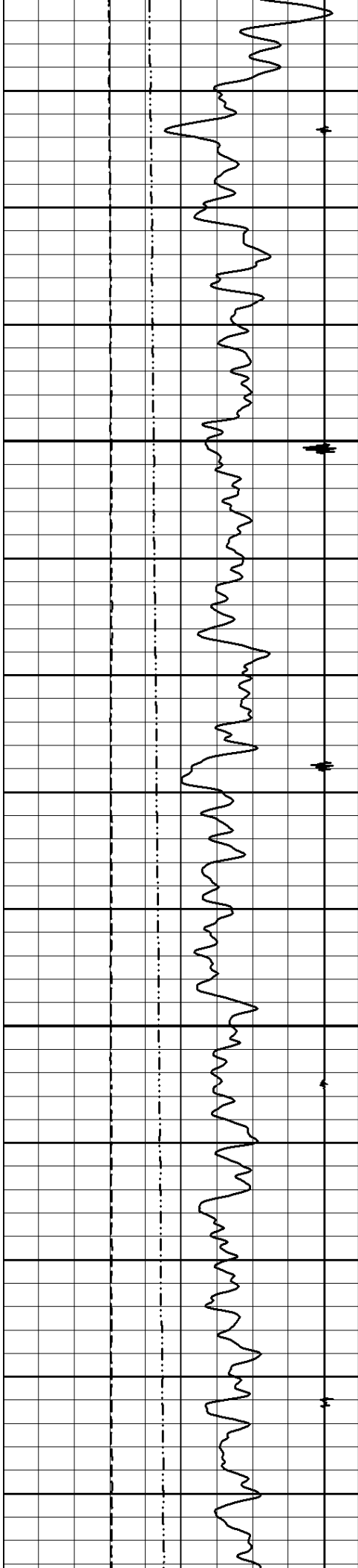


1150

1175

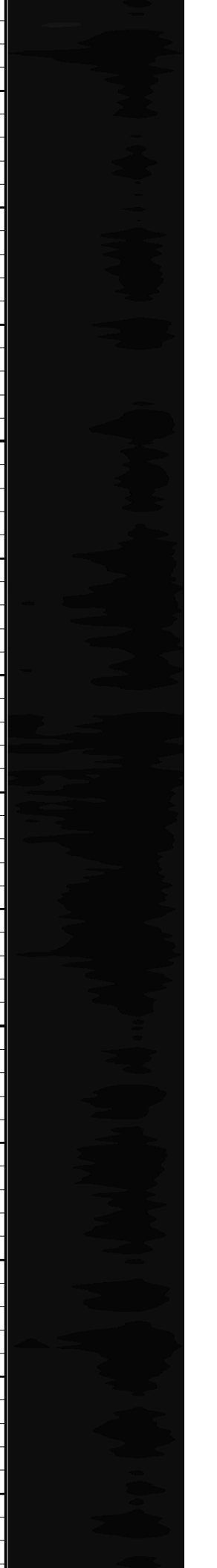
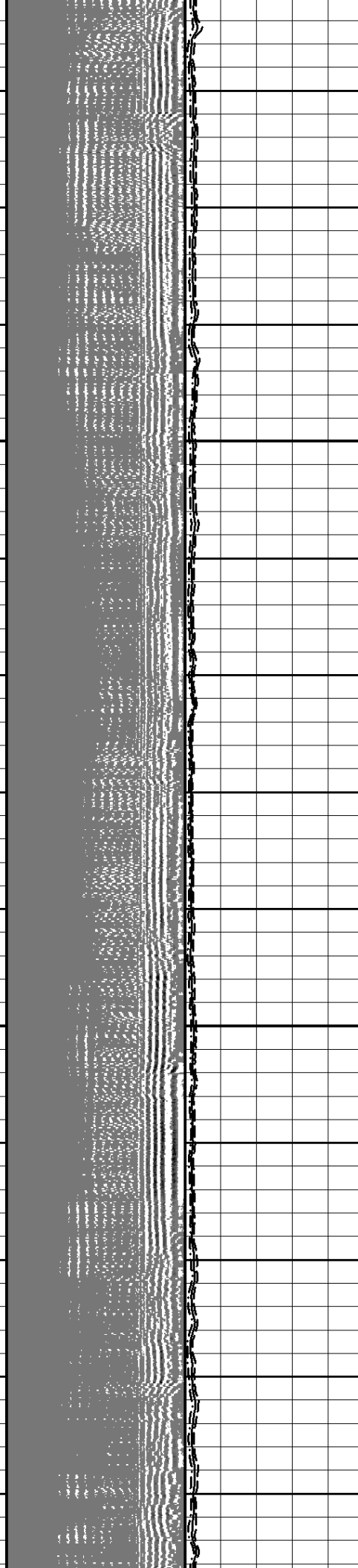
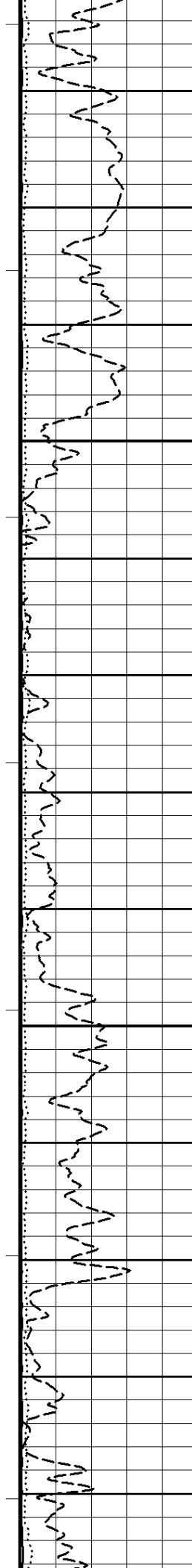
1200

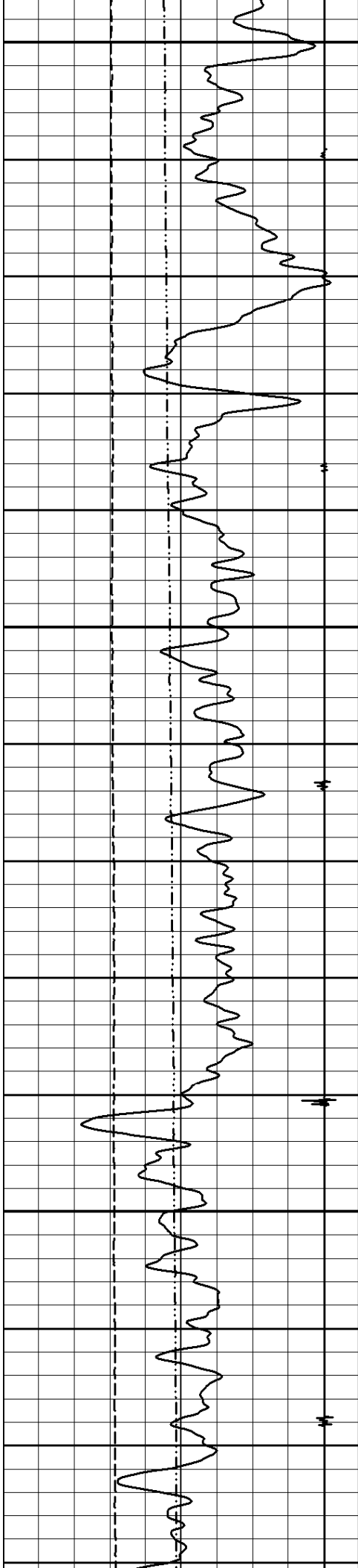




1225

1250

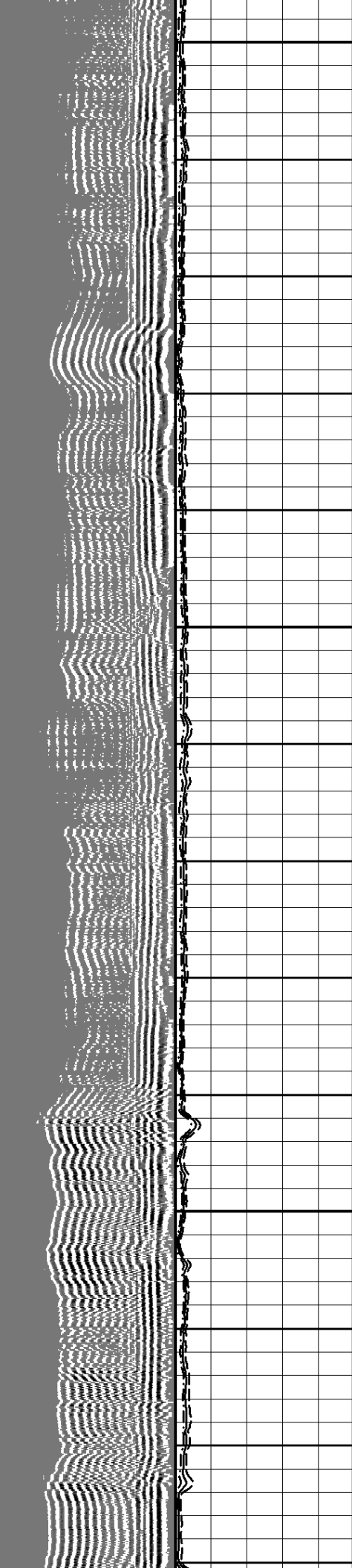
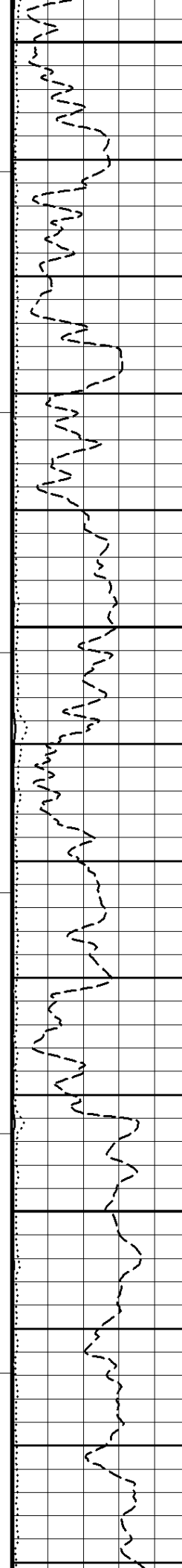


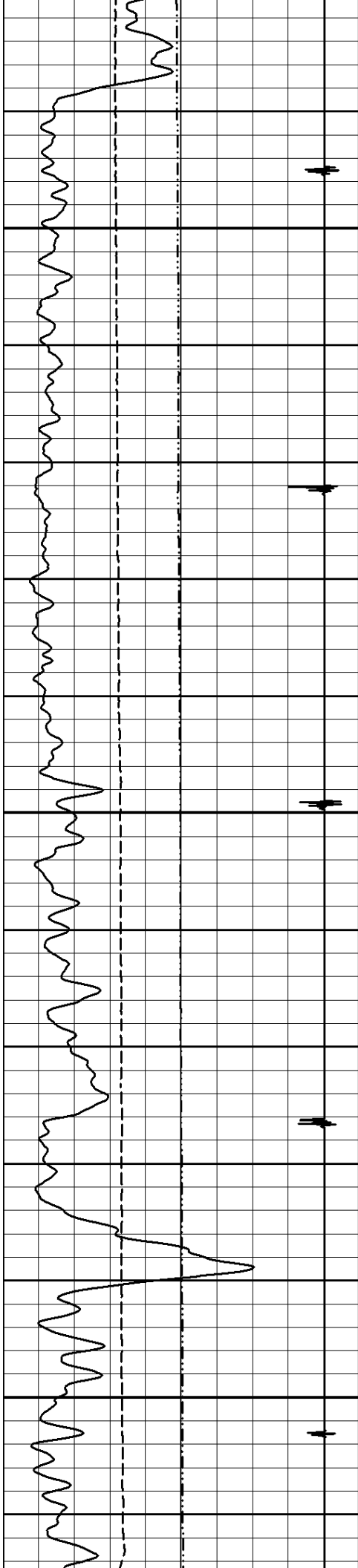


1275

1300

1325

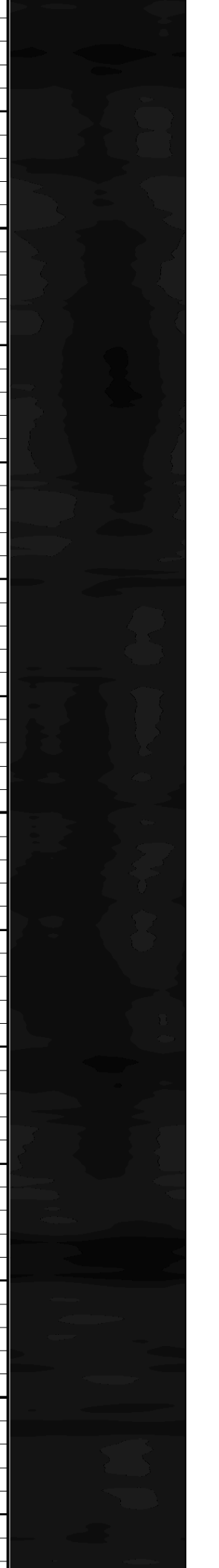
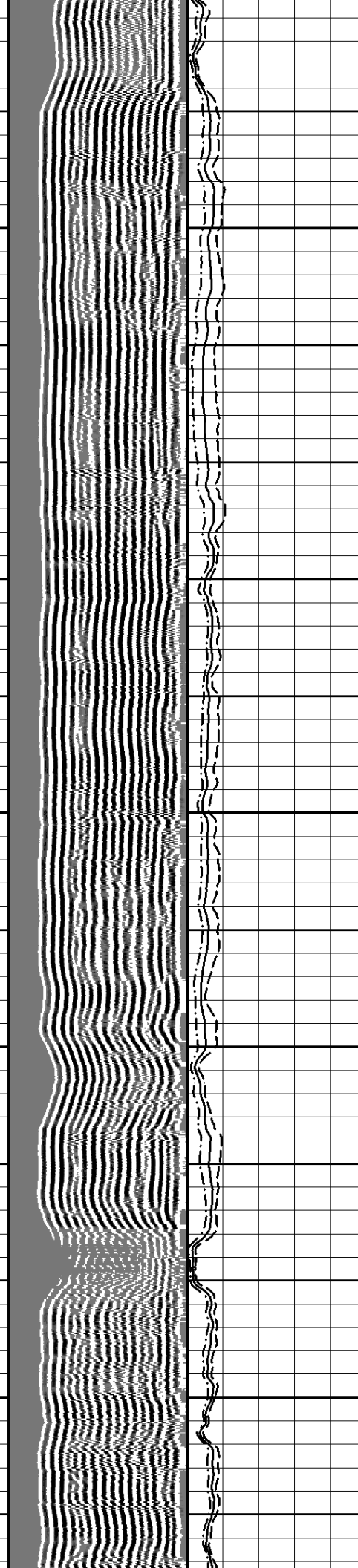
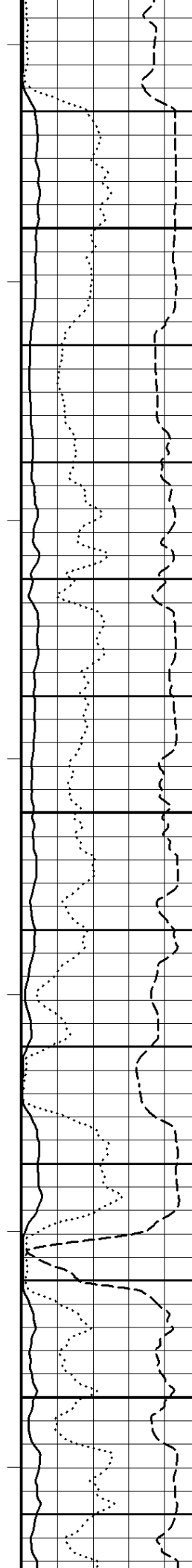


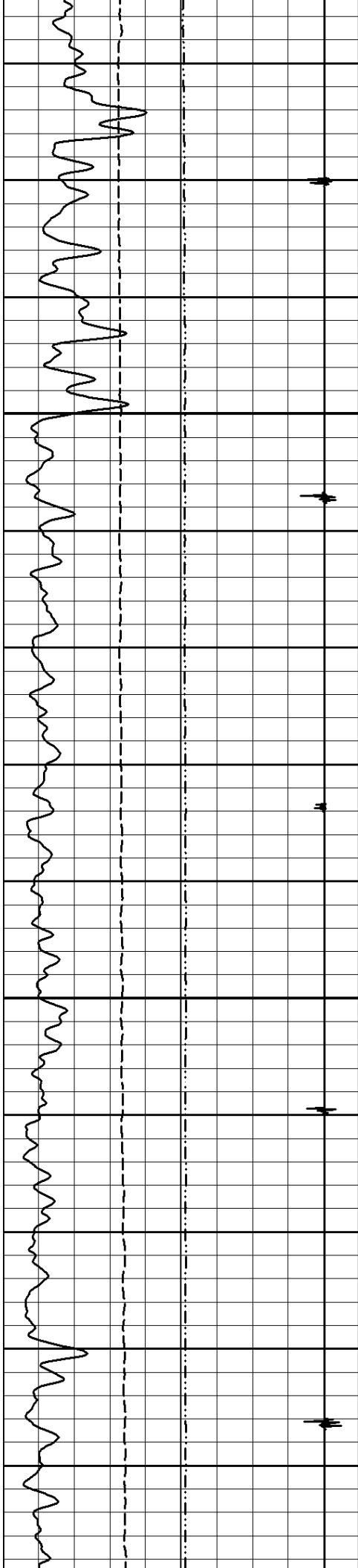


1350

1375

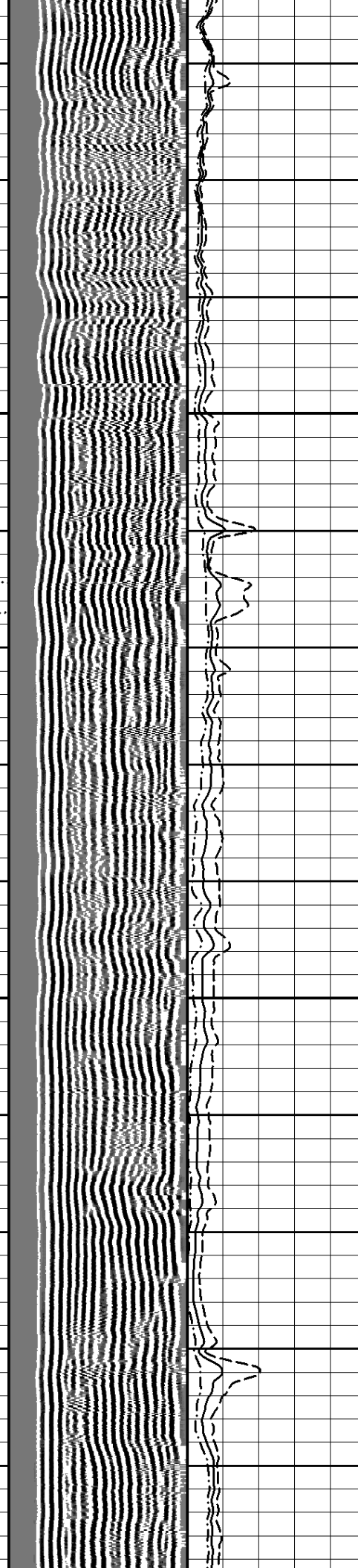
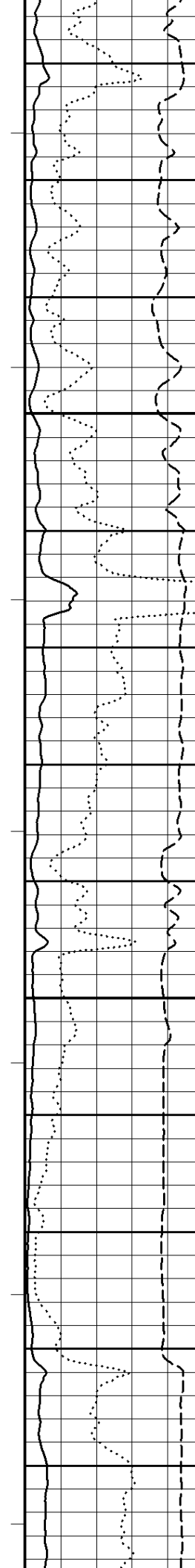
1400

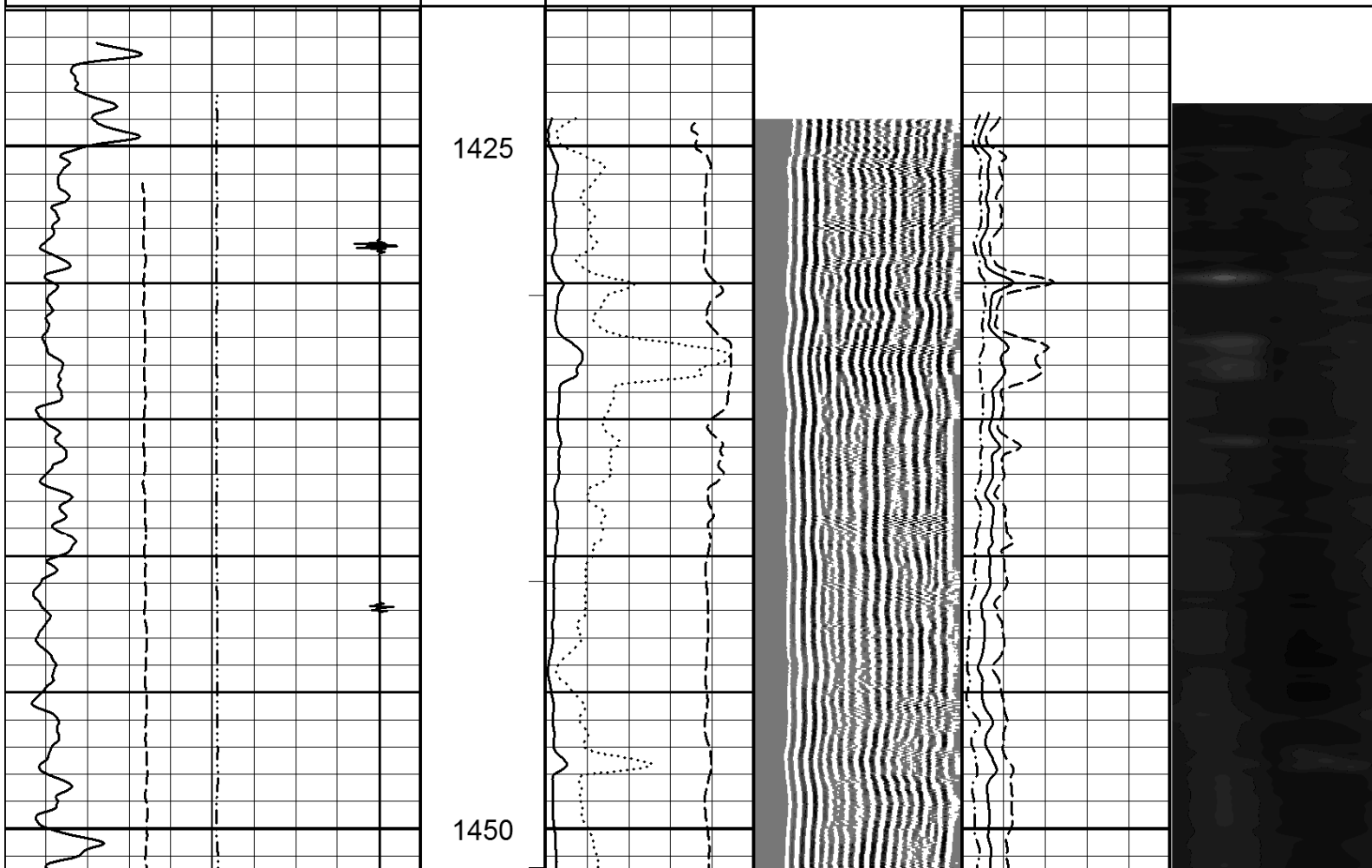
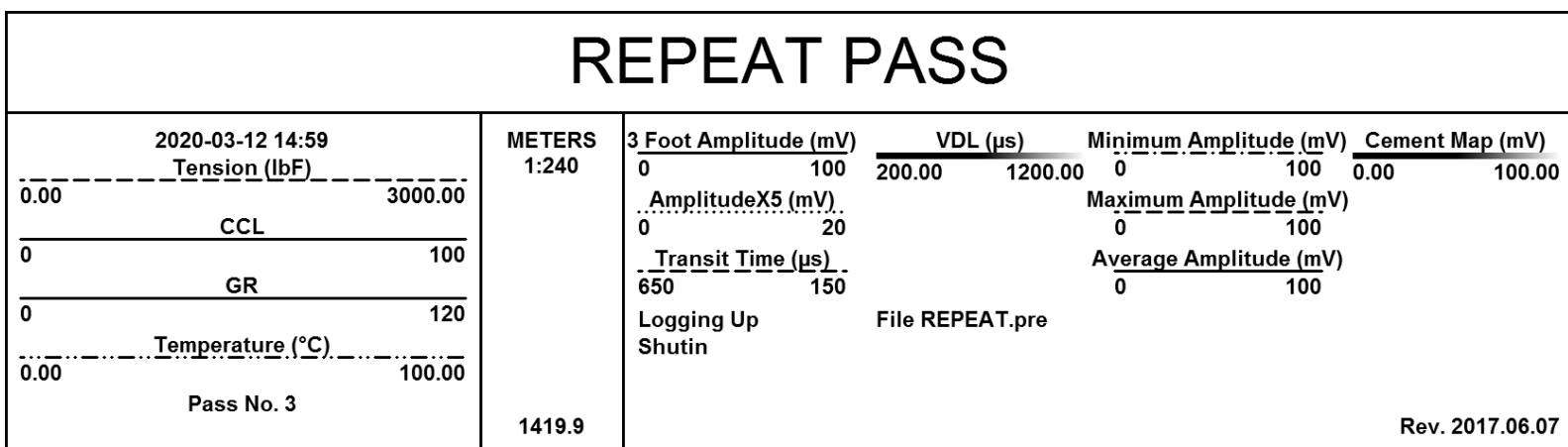
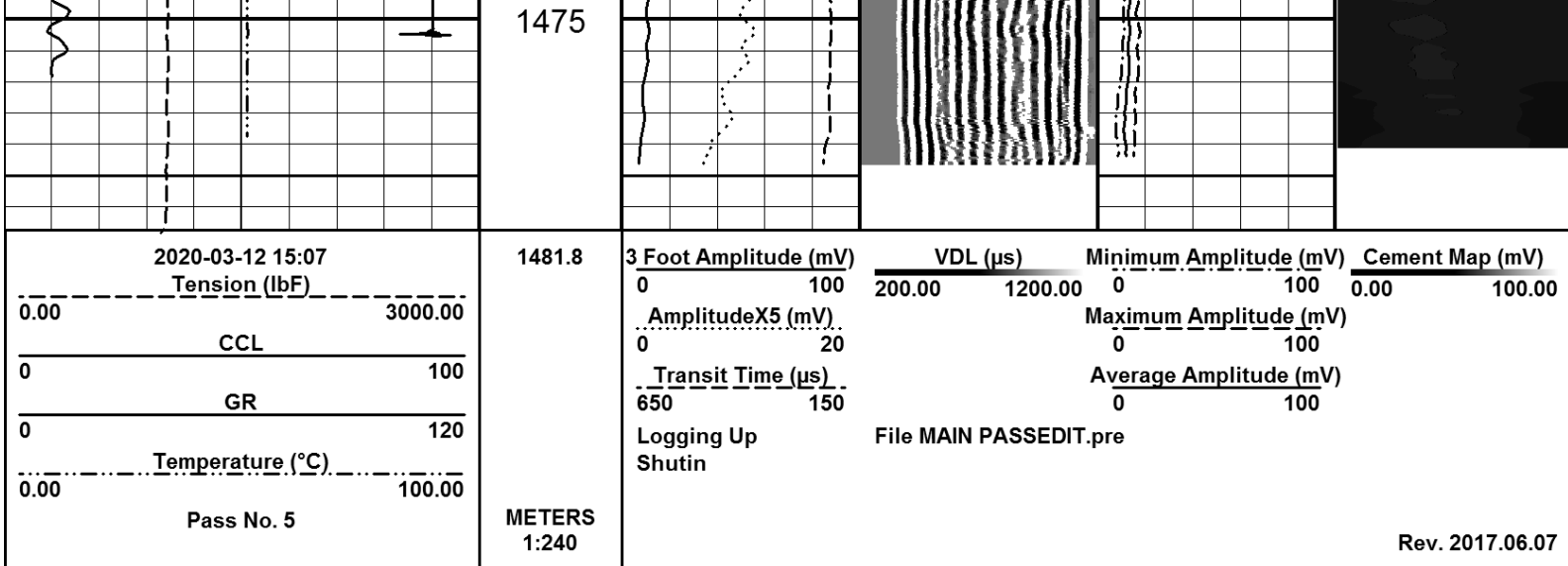


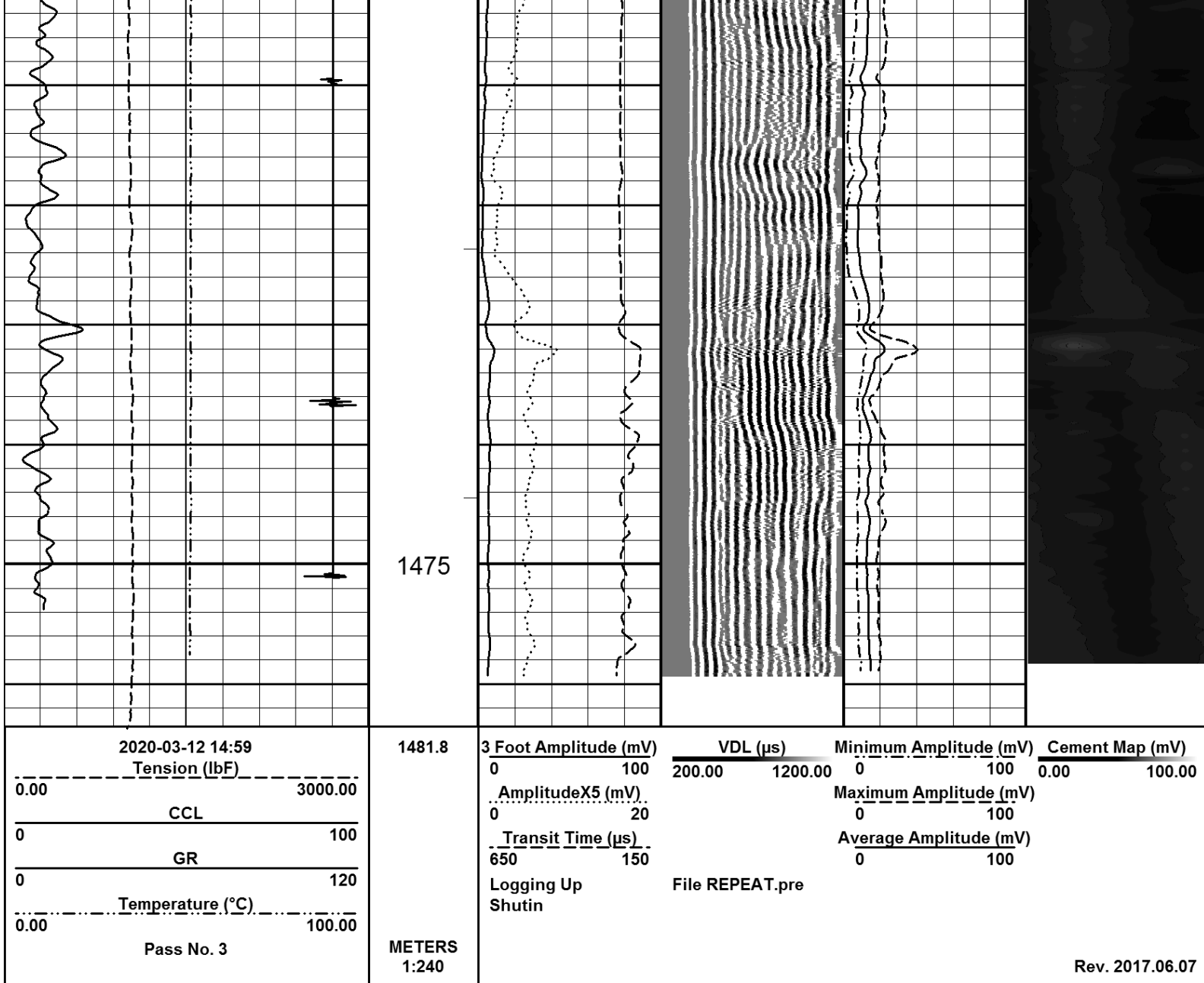


1425

1450







Company ENERGY WORKS CANADA.
Well STRATEGIC ET AL CAMERON A-03 60 10N 117 30W
Field CAMERON HILLS
Province NWT
LSD. SEC. TWP. RGE. W.